

IQVIA PharMetrics® Plus for Academics Enhanced with Mortality Data

Real-world data on commercially insured patients enhanced with the most complete source of mortality data on the market

Today's reality

When it comes to understanding mortality, academia needs accurate answers to complex questions. They are challenged to find insights that shed light on burden of disease, which therapies can extend life and for how long, and whether the U.S. is gaining or losing ground in our fight against specific diseases. Today, academics need a comprehensive source of information with visibility into diagnoses, treatments, related costs, and mortality implications to support their critical research.

The right solution — IQVIA PharMetrics® Plus for Academics enhanced with mortality data

IQVIA PharMetrics® Plus for Academics is a longitudinal health plan database of fully adjudicated integrated medical and pharmacy claims offered specifically for academic research. It includes patient enrollment data from national, regional, and self-insured employer group health plans. Delivery tools and enhanced linkage potential are also available. PharMetrics® Plus for Academics is uniquely positioned to support academic researchers with a wide range of study types, including:

Patient characterization

Incidence and prevalence

Patient journey

Comparative effectiveness

Now enhanced with the most complete source of U.S. mortality data on the market (90% of U.S. deaths compared to official CDC reporting), PharMetrics® Plus for Academics can offer previously unattainable insights into survival rates, treatment impacts, end of life health resource cost utilization, and more.



Mortality data can address research questions spanning multiple areas of focus



Overall and progression-free survival analysis

Understand how long a patient is being treated before disease progression and what is the survival rate for a patient after treatment was initiated



End-of-life health resource cost utilization

Quantify the cost of health resource utilization for end of life by disease area



Safety and epidemiology studies

Proactively map the impact of a disease on a certain patient population based on current vs. estimated mortality rates along with understanding the safety of current treatment



Comparative effectiveness

Compare survival benefit for patients based on treatment selection in a real-world setting

Use PharMetrics® Plus for Academics to answer a wide range of research questions



PATIENT INSIGHTS

- Patient journey
- Patient characteristics
- Incidence and prevalence
- Comorbidities
- Medication use



TREATMENT INSIGHTS

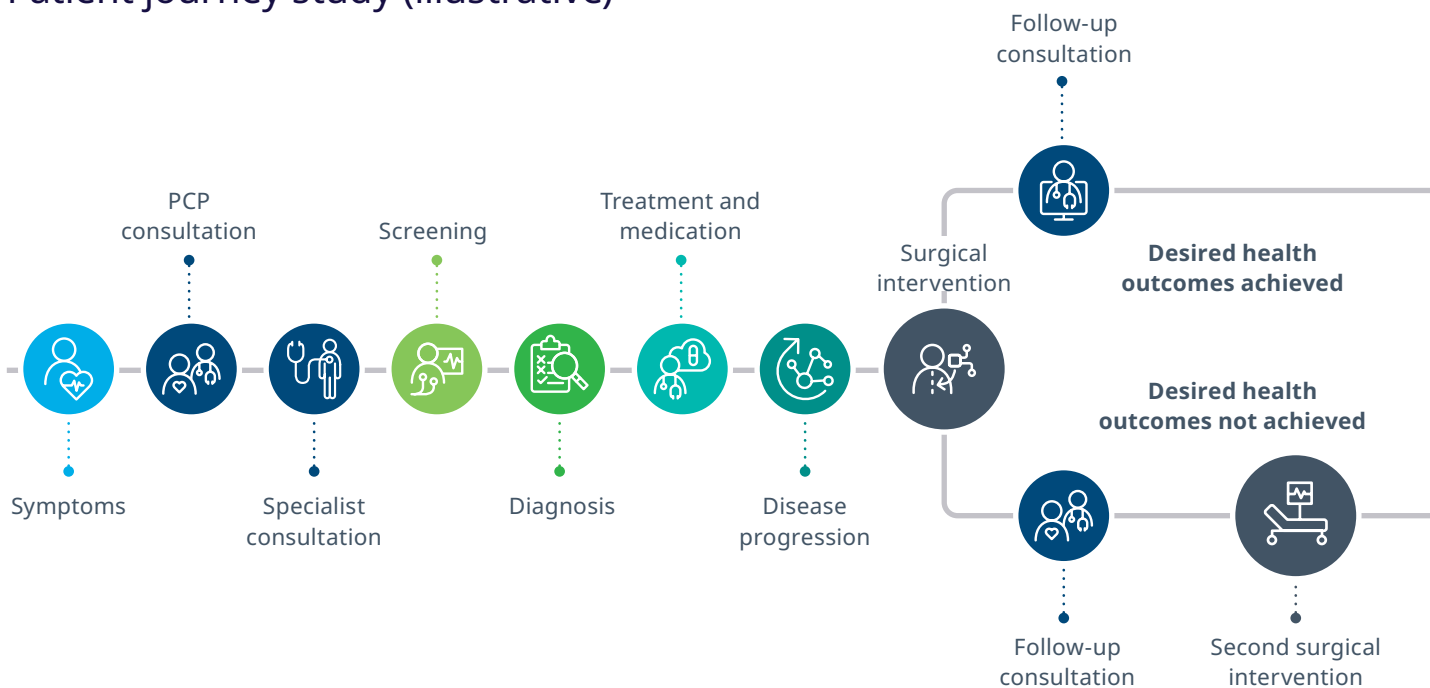
- Treatment patterns
- Adherence and persistence
- Time-to-treatment
- Lines of therapy
- Healthcare outcomes



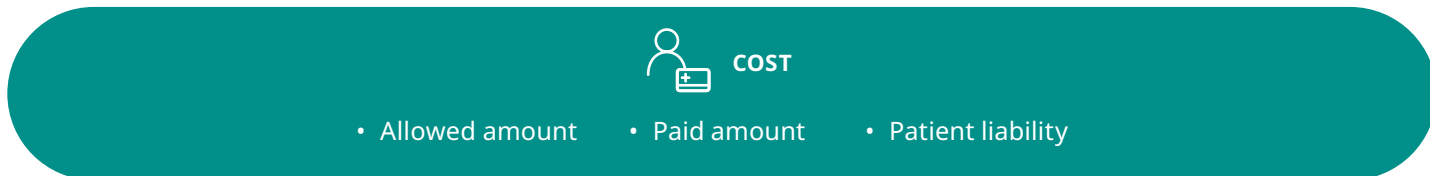
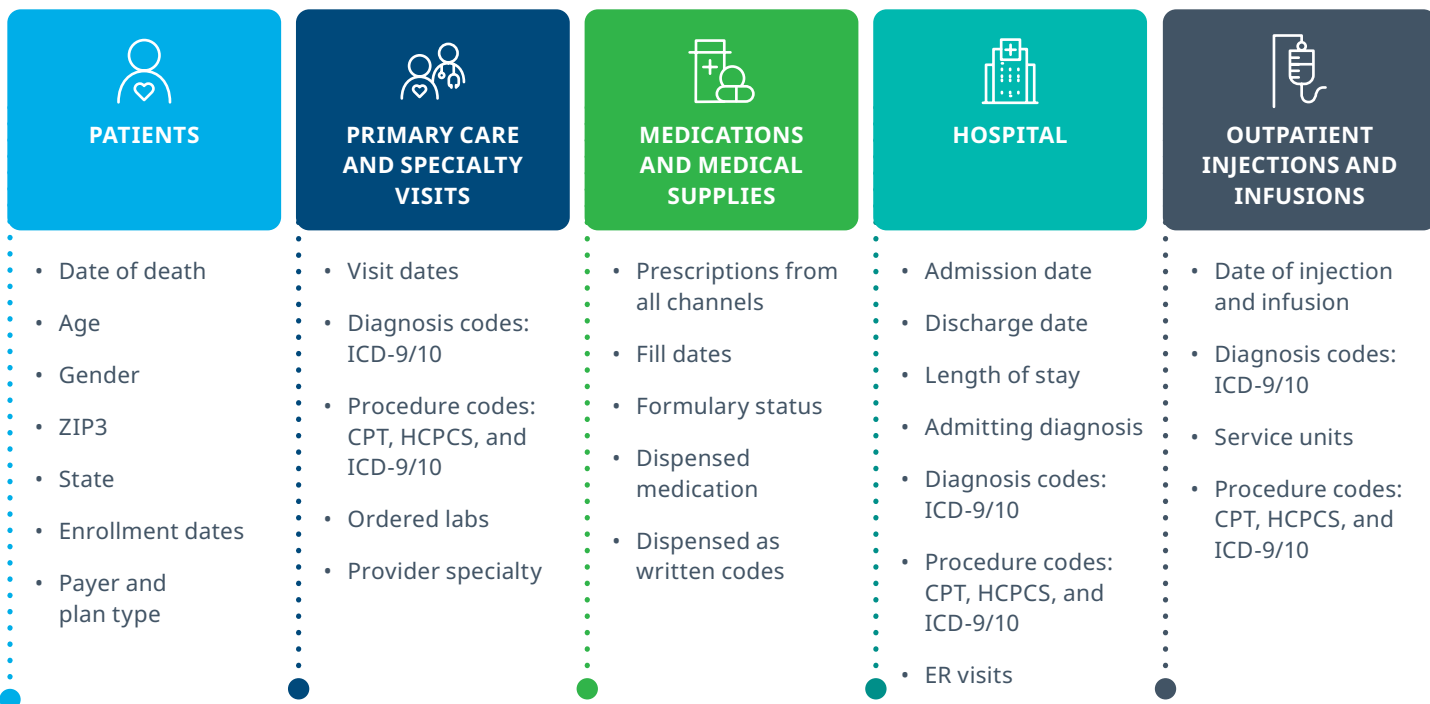
COST AND HEALTHCARE RESOURCE UTILIZATION

- Burden of disease
- Healthcare costs
- Resource utilization — (outpatient, inpatient, and pharmacy)
- Safety and adverse outcomes

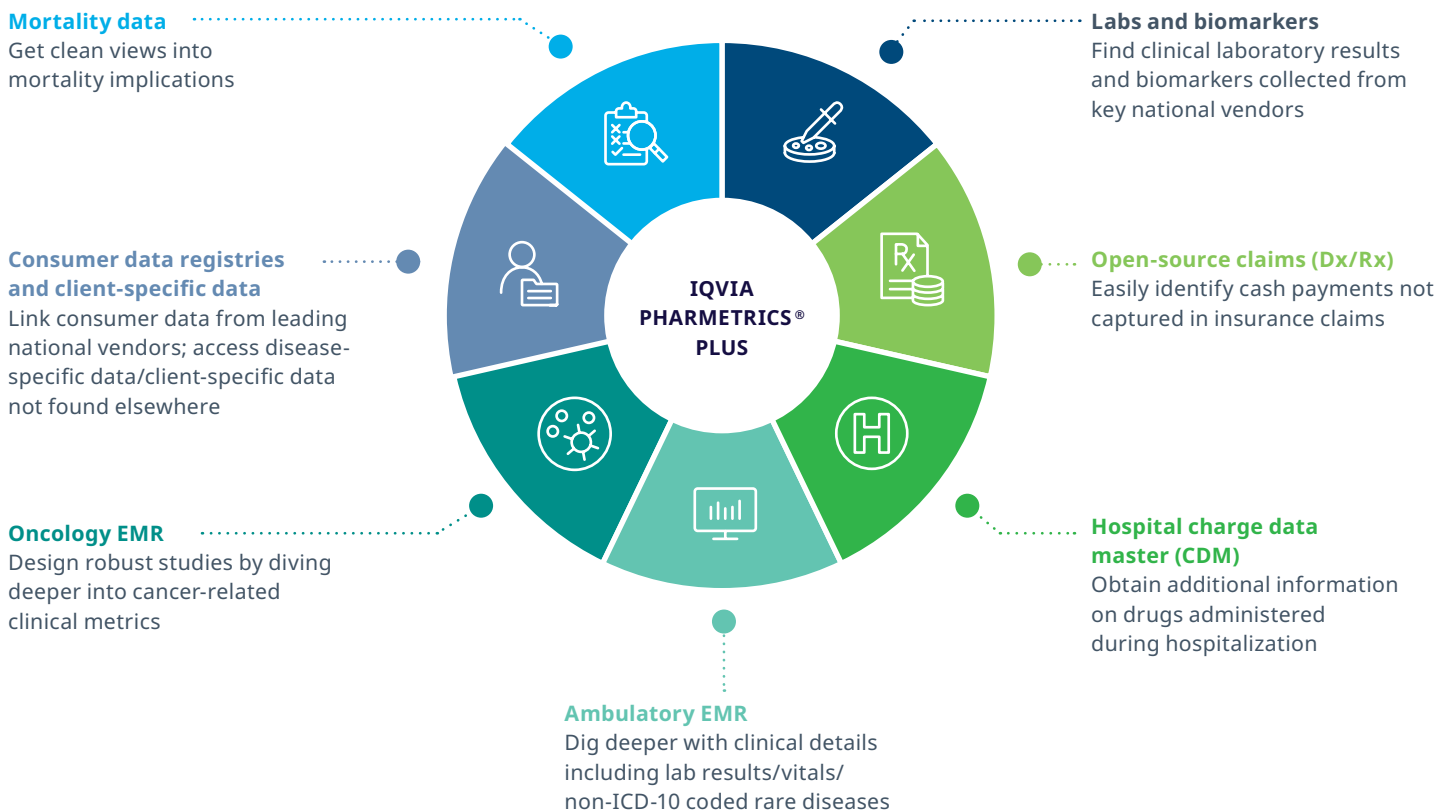
Patient journey study (illustrative)



Key attributes of PharMetrics® Plus for Academics can drive comprehensive patient insights



Link PharMetrics® Plus for a complete view into patient's healthcare journey



About IQVIA Connected Intelligence™

Connected Intelligence brings together IQVIA's unique portfolio of capabilities to create intelligent connections across its unparalleled healthcare data, advanced analytics, innovative technologies and healthcare expertise to speed the development and commercialization of innovative medicines that improve patients' lives.

Discover new insights, drive smarter decisions, and unleash new opportunities with the power of [IQVIA Connected Intelligence](#)