

IQVIA PharMetrics® Plus Enhanced with Mortality Data

Real-world data on commercially insured patients enhanced with the most complete source of mortality data on the market

Today's reality

When it comes to understanding mortality, healthcare organizations need accurate answers to complicated questions. They are challenged to find insights that shed light on how people are dying, what therapies can extend life and for how long, and whether the U.S. is gaining or losing ground in our fight against specific diseases. Companies today need a comprehensive source of information with clear views into diagnoses, treatments, related costs, and mortality implications that support analytical projects, brand initiatives, and all phases of commercialization.

The right solution — IQVIA PharMetrics Plus Enhanced with Mortality Data

With 210+ million enrollees since 2006, enhanced linkability and delivery tools, PharMetrics Plus is already a trusted source of data across the pharmaceutical industry, supporting a wide range of analytical projects within all phases of development and commercialization. PharMetrics Plus includes IQVIA's longitudinal health plan database of adjudicated medical and pharmacy claims, including patient enrollment data with robust linkability and delivery tools.

Enhanced with mortality data, PharMetrics Plus can now answer a multitude of critical questions for HEOR leaders and other researchers by combining mortality

information with our comprehensive real-world data on commercially insured patients. The data includes views into diagnoses, treatments, and associated costs, backed by the most complete source of U.S. mortality data on the market (90% of U.S. deaths compared to official CDC reporting).

MORTALITY DATA CAN ADDRESS QUESTIONS SPANNING MULTIPLE AREAS OF FOCUS



Overall and progression free survival analysis

Understand how long a patient is being treated before disease progression and what is the survival rate for a patient after treatment was initiated



End of life health resource cost utilization

Quantify the cost of health resource utilization for end of life by disease area



Safety and epidemiology studies

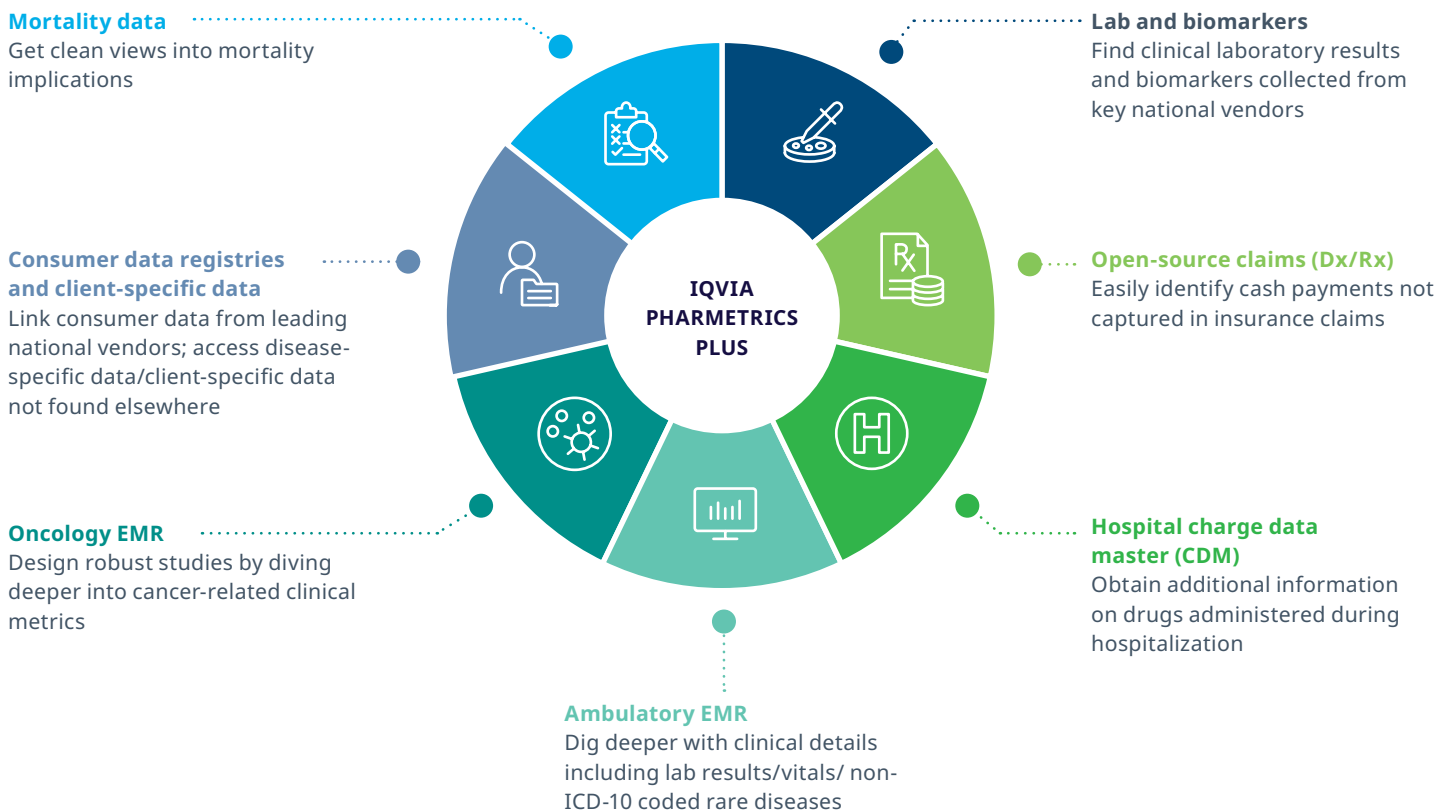
Proactively map the impact of a disease on a certain patient population based on current vs. estimated mortality rates along with understanding the safety of current treatment



Comparative effectiveness

Compare survival benefit for patients based on treatment selection in a real-world setting

Link PharMetrics Plus for a complete view into patient's healthcare journey



Use PharMetrics Plus in all phases of the product lifecycle



EARLY PHASE

- Treatment patterns
- Target product profiles
- Market opportunity assessment
- Forecasting
- Incidence and prevalence
- Orphan drugs and conditions

LATE PHASE

- Patient segmentation
- Cost of treatment
- Burden of disease
- Value drivers
- Comparative effectiveness
- Switches and restarts
- Duration of use

POST-LAUNCH AND IN-MARKET

- Patient journey mortality information
- Comparative effectiveness
- Medication adherence
- Patient cost analyses
- Source of business
- Pharmacovigilance and safety
- Provider segmentation
- Label extension

Key attributes of PharMetrics Plus can drive comprehensive patient insights

PATIENTS

- Mortality information
- YOB
- Gender
- ZIP3
- State
- Enrollment dates
- Payer/Plan type

PRIMARY CARE AND SPECIALTY VISITS

- All visit dates
- Diagnosis codes
- Labs
- Procedure codes
- Provider specialty

MEDICATION USE

- Fill and refill dates
- Retail, mail order, specialty
- Formulary status
- Dispensed medication
- DAW codes
- Quantity
- Days' supply

HOSPITAL

- Admission date and diagnosis
- Length of stay and discharge status
- Diagnosis codes
- Inpatient procedures
- ER visits
- Provider specialty

OUTPATIENT INJECTIONS AND INFUSIONS

- Date of infusion
- Diagnosis codes
- Service units
- Procedure codes
- Provider specialty

COST

- Allowed amount
- Paid amount
- Copayment
- Coinsurance
- Deductible

Versatile features supporting analysis



LINKING

Ability to link PharMetrics Plus to other IQVIA and non- IQVIA databases for more in-depth insights



PROVIDER IDS

Provider NPI available for more than 80% of the claims



DELIVERY AND TOOLS

Data is delivered in native or OMOP format via cloud and/or IQVIA's E360 tool for easy access and utilization



THIRD-PARTY ACCESS

No incremental fees and easy process for third-party use allows for transparency in budgeting

Published studies using PharMetrics Plus

Linked to IQVIA Ambulatory EMR: <https://pubmed.ncbi.nlm.nih.gov/35263660/>

Used in a vaccine comparison study: <https://pubmed.ncbi.nlm.nih.gov/35028334/>

Linked to other IQVIA and non-IQVIA data: [https://www.endocrinepractice.org/article/S1530-891X\(22\)00071-4/fulltext](https://www.endocrinepractice.org/article/S1530-891X(22)00071-4/fulltext)

Linked to a leading national dermatology EMR: <https://doi.org/10.1080/09546634.2018.1479725>

Adherence and cost of biologic therapy: <https://www.ncbi.nlm.nih.gov/pmc/articles/PMC9791931/>



About IQVIA Connected Intelligence™

Connected Intelligence brings together IQVIA's unique portfolio of capabilities to create intelligent connections across its unparalleled healthcare data, advanced analytics, innovative technologies and healthcare expertise to speed the development and commercialization of innovative medicines that improve patients' lives.

Discover new insights, drive smarter decisions, and unleash new opportunities with the power of [IQVIA Connected Intelligence](#)