

IQVIA Cancer Data Network

The Cancer Data Network supports organisations to improve outcomes for NHS cancer patients across the UK

Using data to drive improvements in the quality of care and to increase treatment options for cancer patients.

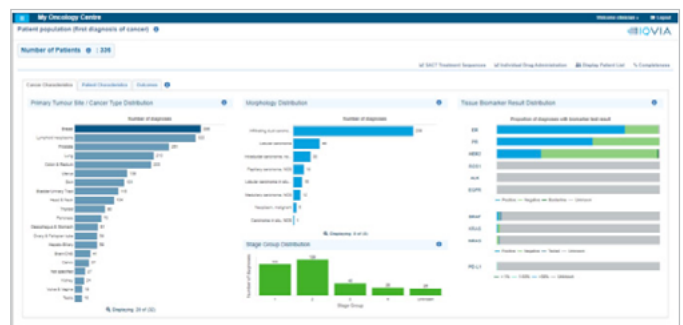
IQVIA established the Cancer Data Network to support DATA-CAN with its objective to improve care and outcomes for cancer patients by making more high quality data accessible for cancer researchers and healthcare professionals.

NAVIGATING CHALLENGES IN CANCER SERVICE DELIVERY

- The COVID-19 pandemic has highlighted the need for more timely data to help those delivering cancer services to be able to understand local cancer populations, use of cancer treatments and outcomes for cancer patients
- Processes for identifying study patients are often manual and inefficient, making it harder to find patients for increasingly complex studies
- Research is shifting towards real world data but limitations exist with current data sources
- Using health data more effectively can drive the development of new cancer diagnostics and treatments, improving patient outcomes and survival rates

The CDN actively works with patients through the CDN Advisory Group and Patient & Public Information and Engagement programme to ensure the use of cancer data in the CDN is transparent, secure and to the benefit of patients.

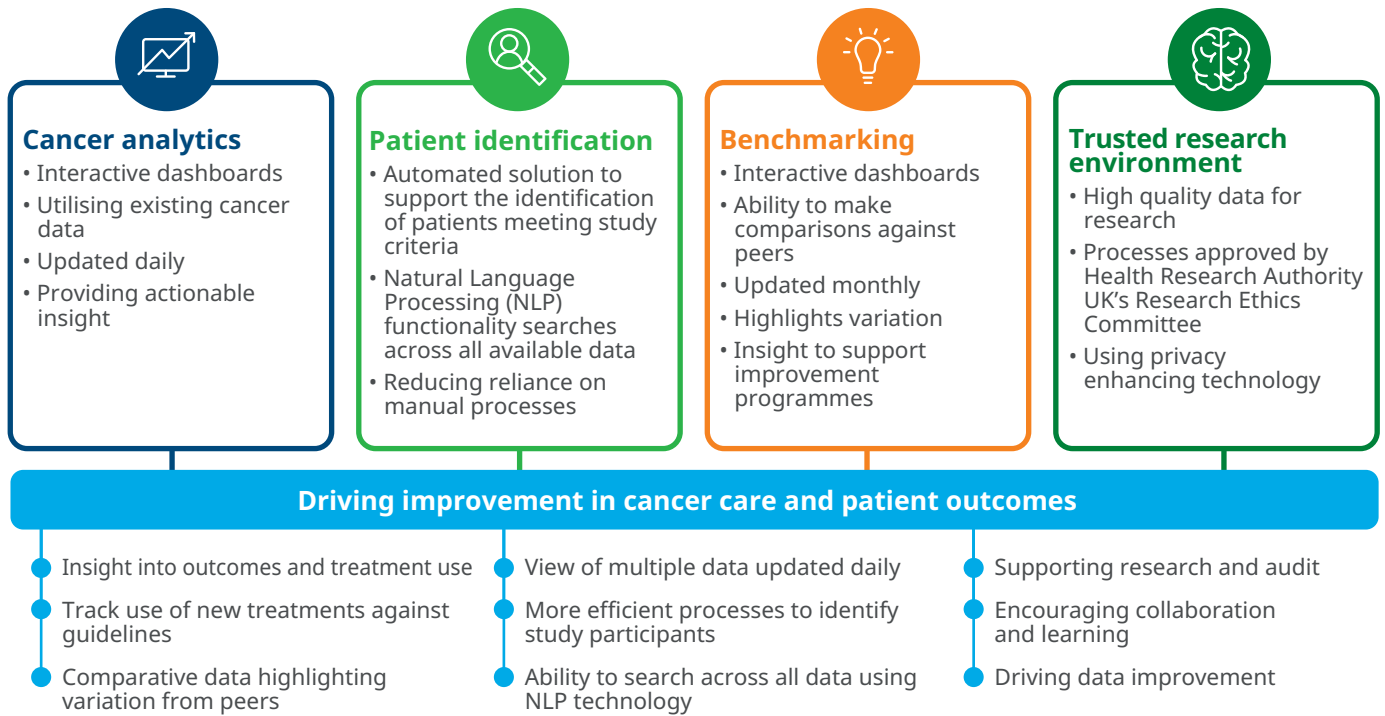
Near real time data refreshed daily



“As a clinician, I believe the Cancer Data Network has the potential to transform understanding of care and outcomes for patients in near real time, to benchmark care against other providers and facilitate research and audit.”

— Professor Michael D Peake OBE, Chair of The Cancer Data Network Advisory Group

Cancer Data Network – Supporting NHS Trusts to harness data and technology



IMPROVING CANCER SERVICE DELIVERY

By **linking cancer data** held within existing Trust systems, those involved in the delivery of cancer services can **gain valuable insight** through dashboards which are **refreshed every 24 hours**.

The up-to-date understanding of **specific patient populations at your Trust** will help manage patients in accordance with changes in national guidance, whilst also providing an understanding of **changing treatment regimens** and their **impact on treatment outcomes**.

IDENTIFYING TREATMENT VARIATION THROUGH BENCHMARKING

Using non-identified data, IQVIA provide participating organisations with access to benchmarking dashboards to **help them understand variations in care**. By analysing data from across cancer centres, organisations can learn how other centres manage similar patient cohorts.

MATCHING PATIENTS TO CLINICAL STUDIES

Patient identification for studies remains a manual process in many NHS organisations. Furthermore, investigators aren't always aware of the studies on offer at their sites or across the UK, limiting the options for patients.

The Cancer Data Network provides a tech-enabled solution to support **automated patient identification** for studies in a simpler, faster and more efficient way. This solution will help increase the options for patients through facilitating access to new treatments under development.

MAKING HIGH QUALITY HEALTH DATA AVAILABLE FOR RESEARCH

Using a wide variety of privacy-enhancing technologies and safeguards to protect individual privacy, non identified data is made available in a Trusted Research Environment, supporting approved researchers to better understand cancer pathways, outcomes and treatment use for different patient cohorts.

CONTACT US

To learn more about the IQVIA Cancer Data Network (CDN) please contact CDNUK@iqvia.com | Twitter: [@IQVIA_UK](https://twitter.com/IQVIA_UK) | LinkedIn: [IQVIA](https://www.linkedin.com/company/iqvia)

[iqvia.co.uk/CDN](https://www.iqvia.co.uk/CDN)

[iqvia.com/locations/united-kingdom/information-for-members-of-the-public/cdn-research-data-protection-notice](https://www.iqvia.com/locations/united-kingdom/information-for-members-of-the-public/cdn-research-data-protection-notice)