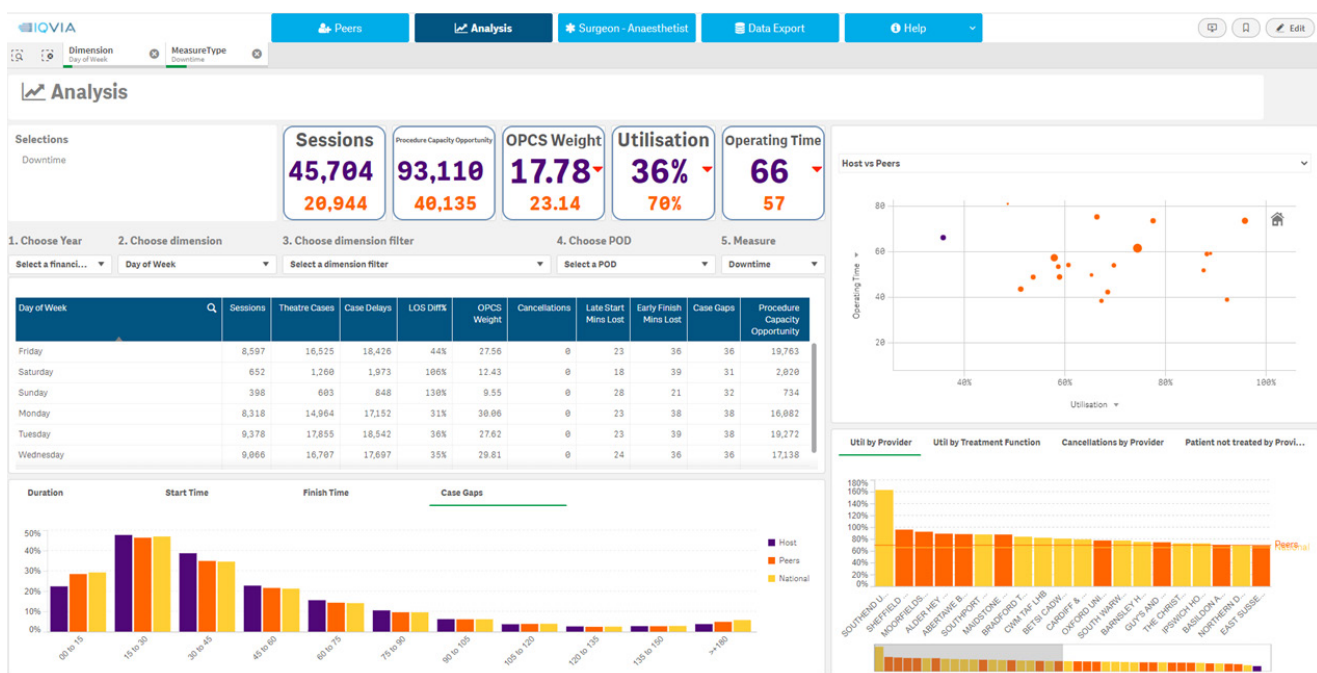


IQVIA's Healthcare Optimisation Benchmarking Theatres Module

The ideal companion to support delivery of elective recovery plans

Compare your theatre productivity with peers across the country to identify clinical and operational best practice with other NHS organisations.

HOB Theatres screenshot



By comparing clinical behaviour and identifying and sharing best practices, IQVIA's benchmarking services enable providers to identify opportunities in theatres to improve productivity and raise quality for hospital services.

BENEFITS OF SUBSCRIBING TO IQVIA'S HOB THEATRES SOLUTION

The Theatres module is a dashboard within the most cost effective and wide-ranging benchmarking solution available. Access to the Theatres module provides you with a unique and unparalleled overview of the efficiency, productivity, and effectiveness of the theatres in your organisation.

The Theatres Module:

- Provides insight into the usage of expensive operating theatres
- Measures the efficiency of your theatres with intra and inter trust comparisons
- Provides perspectives of theatre downtime, including start and finishing times, where time is lost and underutilised, identifying procedure capacity opportunities and supporting productivity improvement
- Compares operating theatre times, scheduling, case delays and outcomes
- Complements the use of Model Hospital

CONTACT US

NHSsolutions@iqvia.com