


# IQVIA Health Data Catalog

The go-to global source to rapidly identify the most relevant Real World Data sources



### Welcome to the IHDC Infographics!

IHDC makes assessing real world data fast and easy with **4,300+ datasets’ profiles** across 100+ countries described by up to **250+ core variables** enriched for some with **disease area specific descriptors**.

IHDC is accessible upon subscription, either in SaaS Syndicated mode (IQVIA interface & IQVIA content) or in SaaS proprietary mode (IQVIA interface + IQVIA content + client proprietary/confidential content)



### The IQVIA Health data catalog evolution in 2025

Via the proactive management of the community of data sets owners and experts — in and outside of IQVIA — IHDC is undergoing relentless evolution resulting in the following main changes over Q1\_2025



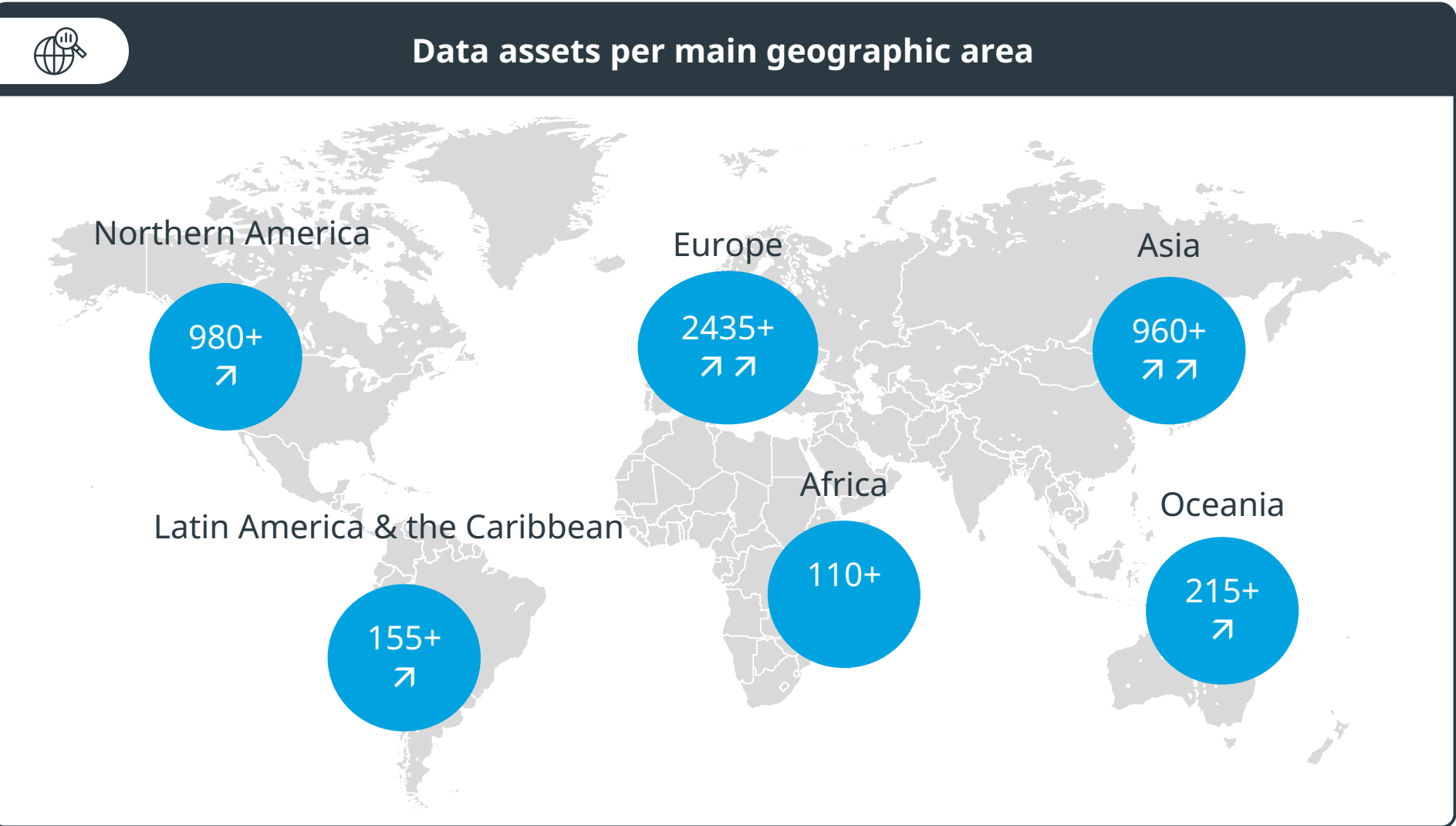
The # of referenced data sets has increased by **135+** since beginning of 2025, reaching 4,300+



The # of datasets referenced in Europe has showed the highest increase (55+ additional assets)



The # of listed sources also increased in Asia (50 new assets) and Oceania (20 new assets)





Most of the data sources referenced in IHDC are disease specific. Oncology is the most frequent therapeutic area covered (1,130+ oncology specific datasets)



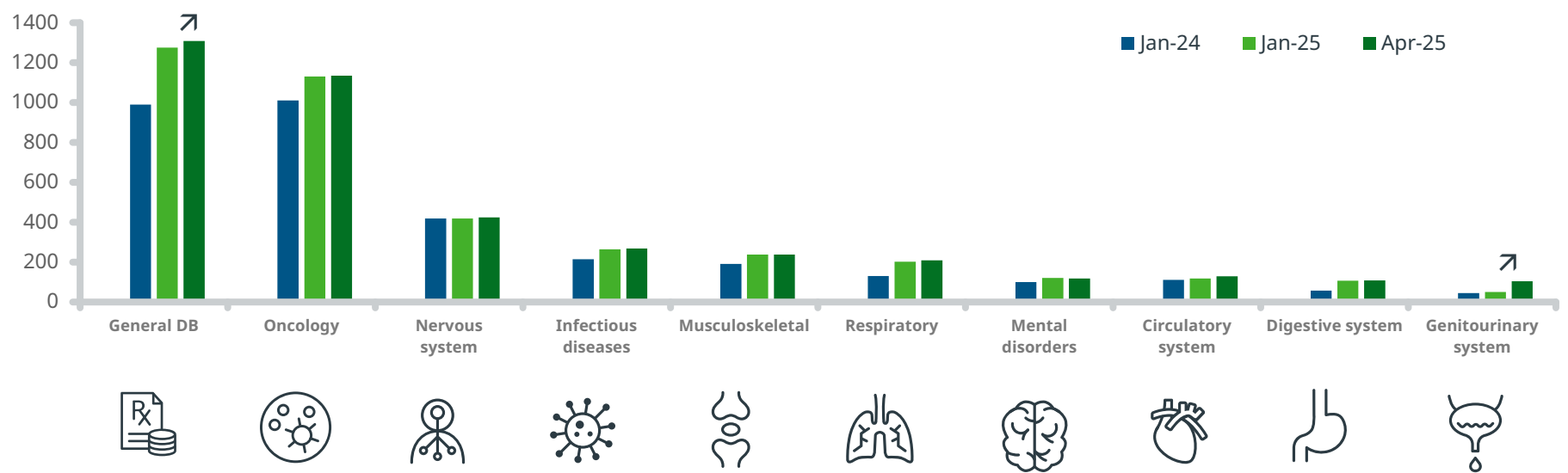
The number of “genitourinary disease datasets” has increased with more than 50+ new references added since Jan 25.



The number of “general datasets” also shows continuous increase with more than 30+ new references added over the last 3 months



## Data assets per disease areas (extract)

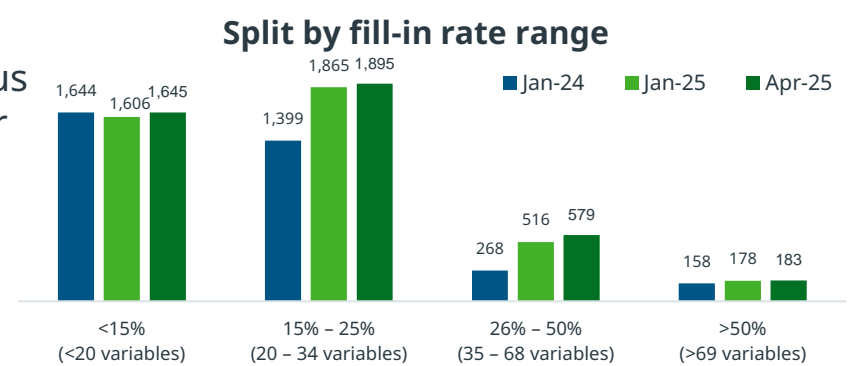


Note: some data assets have been archived as no longer active – This can result in a decreasing number of data assets

The **fill-in rate** on the landing page of the catalog is set as an indicator providing transparency and managing expectations on the available level of information on listed datasets. The % represents the number of fields documented out of expected number to be documented

Ongoing orchestrated efforts of **180+ teams** of data holders and SMEs (including external data owners who now can edit their own datasets profiles) resulted in an **increased depth of dataset profiling**: in addition to the 135+ datasets added, 70+ profiles have seen their fill-in rate increased by +8% on average (with a maximum value of 80+ %)

These efforts to deepen IHDC content translate into a continuous and faster increase in the number of datasets showcasing a significant level of depth (fill-in rate >25%, corresponding to more than 35 variables documented)



The efforts to enrich the content of the catalog are facilitated by some developments – transparent for the users – significantly contributing to an improved quality of the content. The “import program” for example, already facilitating the harmonization of IHDC information across data assets coming from different sources, is regularly improved to facilitate and harmonize updates

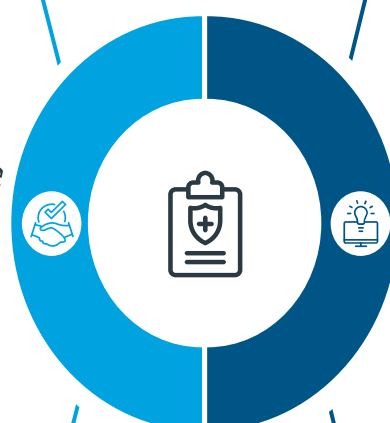


## IQVIA Health data catalog: What's next?

After an extremely rich year 2024, 2025 is expected to be another year of progress for IHDC, in terms of **content breadth, depth** and **enhanced user experience**. Stay tuned!

### Content breadth and depth

- Scope enlargement to include **other types of health datasets**:
  - The Health Care Professionals (HCPs) datasets module is currently being tested
  - The Sales Datasets one is undergoing the specifications phase
- The **network of data partners** directly contributing to IHDC is growing.
- Catalog **precision level** improvement:
  - Deeper **classification of datasets by disease area**
  - A few additional disease area deep dives will be made available in 2025
  - 5 disease area deep dives out of the 20+ already available, will be updated in the coming months



### User experience improvement

- In 2025 the focus will be on leveraging AI to make search easier and more efficient:
  - An AI assistant facilitating search is being tested, release planned for 2<sup>nd</sup> half of the year
- Other 2025 developments will aim at streamlined experience and improved content:
  - Facilitated management by admins and contributors (maintainers)
  - Dataset duplication alerts
- This follows a feature-rich 2024, which saw significant improvements in the user interface, including a new UI and new improved user experience (save search, save export, etc.)



More information [here](#)



Contact: [HealthDataCatalog@iqvia.com](mailto:HealthDataCatalog@iqvia.com)