

# IQVIA Health Data Catalog

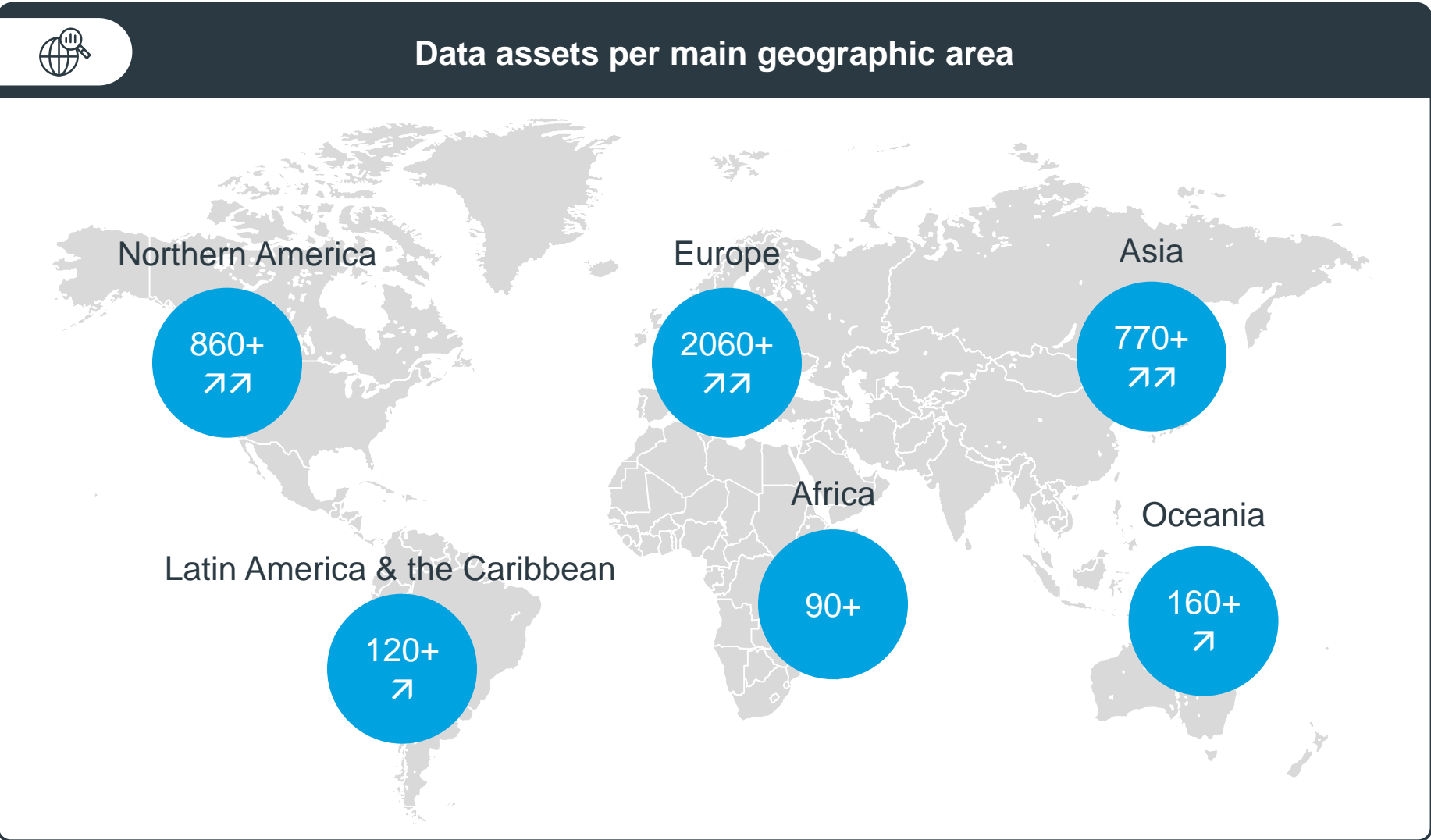
The go-to global source to rapidly identify the most relevant Real World Data sources

### Welcome to the Q1 2024 IHDC Infography!

IHDC makes assessing real world data fast and easy with 3,600+ unique data assets across 100+ countries described by up to 200+ variables.  
IHDC is accessible upon subscription, either in SaaS Syndicated mode (IQVIA interface & IQVIA content) or in SaaS proprietary mode (IQVIA interface + IQVIA content + client content)

### The IQVIA Health data catalog evolution in 2024

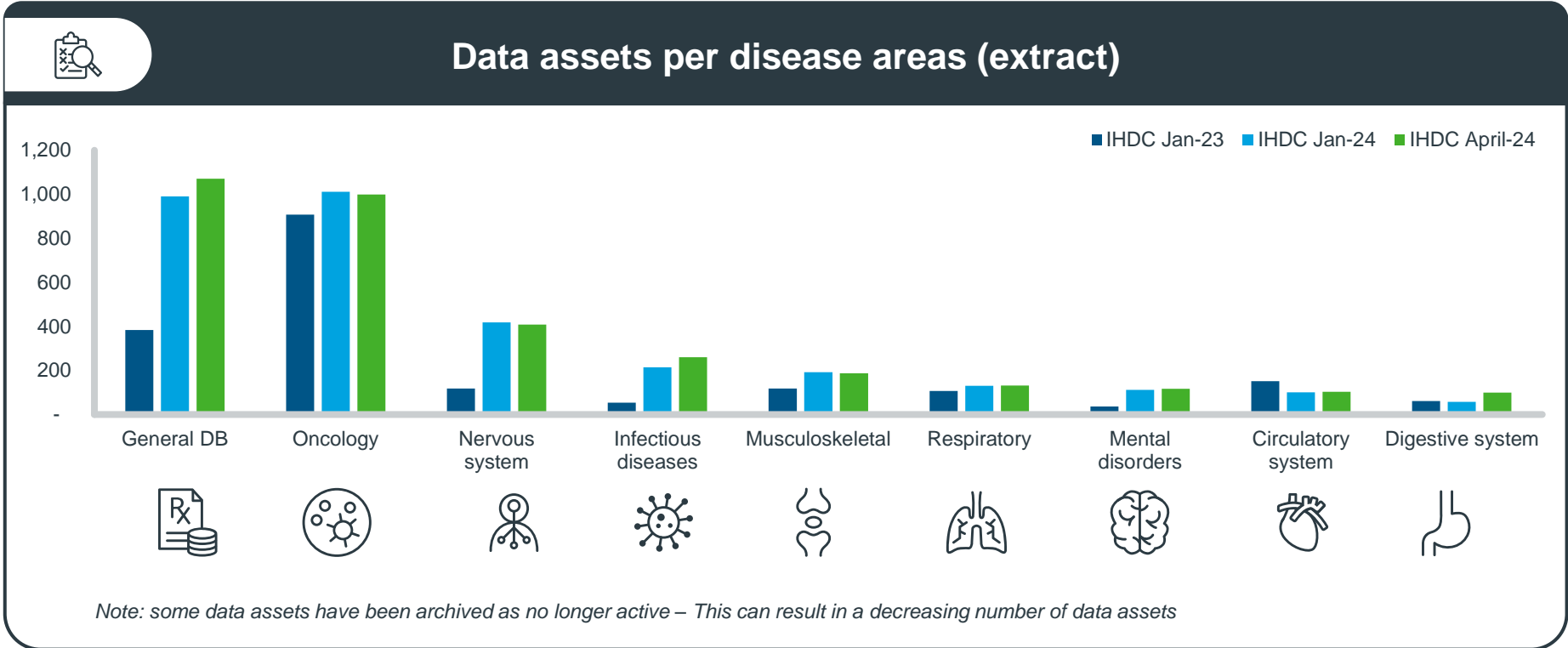
Via the proactive management of the community of data sets owners and experts — in and outside of IQVIA — IHDC is undergoing relentless evolution resulting in the following main changes since January 2024.



Most of the data sources referenced in IHDC are disease specific, oncology being the most frequent therapeutic area covered

However, the recent add-ons have especially benefited to non-oncology assets, and in particular to databases covering infectious diseases (50+ new assets) and diseases of the digestive system (40+ new assets)

The number of “general datasets” also significantly increased: 100+ added, most of those from hospital settings



The **fill-in rate** on the landing page of the catalog is set as an indicator providing transparency and managing expectations on the available level of information on listed assets. The % represents the number of items documented out of expected items to be documented

The ongoing orchestrated efforts of **165+ teams** of data holders and SMEs resulted in an **increased depth of data sets’ profiling**: In addition to the 140+ added assets, **440+ data assets profiles have been updated** since beginning of 2024, resulting in **increased fill-in rates** (+5 points on average, up to 75+ points)

These efforts to deepen IHDC content result in a continuously increasing proportion of data assets showcasing a significant level of depth (fill-in rate > 26%, corresponding to more than 35 variables documented), while the share of data sets with low fill-in rates is decreasing

Fill-in rate range	Jan 2023 2,172 assets	Jan 2024 3,469 assets	April 2024 3,611 assets
<15% or <20 variables	1,985	1,644	1,537 ↘
15% – 25% or 20 – 34 variables	37	1,399	1,544 ↗
26% – 50% or 35 – 68 variables	14	268	366 ↗
>51% or >69 variables	136	158	164

The efforts to broaden and deepen the content of the catalog are facilitated by some developments – transparent for the users –significantly contributing to an improved quality of the content. The “import program” for example, already facilitating the harmonization of IHDC information across data assets coming from different sources, has been improved to facilitate and harmonize updates

**IQVIA Health data catalog: What’s next?**

With several changes already scheduled, 2024 is expected to confirm the development dynamism of IHDC in terms of content **breadth and depth** with added emphasis on terminology harmonization and data sets quality metrics

**Quality and relevance of the content**

- Currently focusing on patient data, IHDC will progressively include **other types of health data** (sales data, health care professional data, unstructured data, etc.)
- Further improvements will be made to support harmonization of terminology** across various fields (such as “data categories”)
- New chapters will be made available to further deepen the description of data sets:
  - Disease area deep dives** providing (upon subscription) detailed focused information on how data assets cover selected conditions – The 1<sup>st</sup> deep dives (Infectious Diseases, COVID19, Asthma, COPD and Ovarian Cancer) are already available, many more to come over 2024
  - A data quality** framework, further expanding existing variables such as coverage, freshness, will be added to facilitate the evaluation of fitness for purpose of data assets for specific research projects

**User experience improvement**

- “**Save search**” feature allowing to save search criteria (instead of re-entering them systematically) is now available making it fast to refresh results as needed. Soon an “alert” feature will make sure to send notifications when new data assets corresponding to your saved search will be added in the catalog
- Save export template (Q2)
- In Q3 a new user interface** will be released, to facilitate search and navigation across IHDC chapters
- All over 2024**, new user profiles will be deployed to ensure maximum flexibility to correspond to client infrastructure, resources and objectives