

# IQVIA GrantPlan

*Confidently forecast and budget investigator grants*

## Fast, accurate, efficient budgeting

Overcome the complexities of intricate protocols, large enrollment requirements, global site networks and delivery demands with IQVIA GrantPlan. Build more accurate study budgets while reducing costs and improving start-up times.



### NEGOTIATE STREAMLINED, COMPLIANT INVESTIGATOR GRANTS

IQVIA GrantPlan simplifies the budgeting process, enabling life sciences companies and CROs to more efficiently, accurately and confidently build and adjust realistic clinical trial budgets and better negotiate investigator grants globally across all study phases and therapeutic areas.

### MARKET LEADER FOR A REASON

This hosted, multi-tenant solution helps sponsors improve the site and investigator experience, while providing increased clarity and better oversight. The only cost tool to combine the most robust sources of data across the industry, GrantPlan provides fair market value (FMV) itemized costs that allow customers to more precisely budget across over 100 countries and 5,400 indications as they plan clinical trials.

### UNPARALLELED ACCURACY & OPTIMIZED PERFORMANCE

**More predictable study performance**  
Combines the most robust data sources encompassing 5,400+ indications

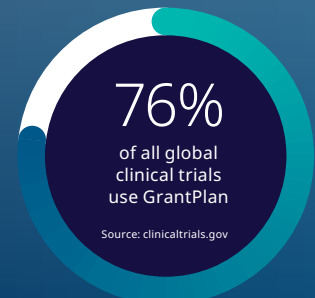
**Improved site experience**  
Out-of-box deployment within days; built-in on-demand learning modules; live rep access

**Greater efficiency**  
Uses FMV line items for more accurate budgeting and greater cost savings



**Faster cycle times**  
Make more strategic, informed allocation decisions using latest data from 82K+ final budgets negotiated over last 2 years

**Heightened accuracy**  
Compares to industry benchmarks and makes necessary adjustments; has visibility of previous final agreements



Source: clinicaltrials.gov

**DEFEND YOUR DECISIONS WITH THE MOST UP-TO-DATE DATA AVAILABLE**

**Continual information updating**

Benchmarks are continuously expanded with blinded user data at the completion of each study. Data is refreshed quarterly.

**Complete data availability**

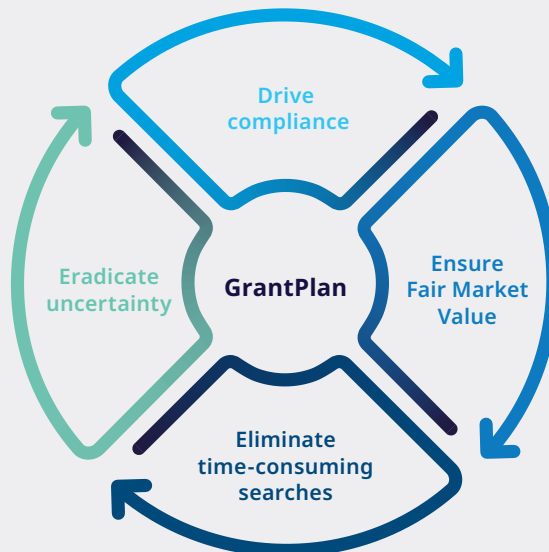
For price list, where actual data is insufficient, proprietary algorithms substitute benchmark costs which are updated annually. The client never sees a 0 in a line item. Supporting information is provided.

**Unique U.S. Standard of Care module**

Highlights charges already covered by patient insurance to avoid duplicate billing and save costs.

**Power of Three and Five**

Actuals come from at least 3 companies and at least 5 data points no more than 2 years old.



**Outsourcing enrollment model validation**

Sponsors can run budgets through GrantPlan for evidence-based knowledge of what they should expect to see from CROs. Improves transparency and governance.



**GRANTPLAN INVESTIGATOR-INITIATED STUDY (IIS) TOOLS**

While investigator-initiated studies (IIS) have very specific needs, frequently they are not well met. GPI is the only tool built specifically for IIS. It allows users to forecast and evaluate FMV to assess and determine IIS budgets.

- Includes additional sections and line items accounting for FTE and per hour personnel fees
- Codes broken down by specialty and number of years' experience using in-application calculations.
- Can enter percent allocation and duration for each FTE and system calculates appropriate budget.

For more information on how GrantPlan can improve your clinical trials' probability of success, please contact us today to speak with an expert: [orchestrategyourtrials@iqvia.com](mailto:orchestrategyourtrials@iqvia.com)



CONTACT US  
4820 Emperor Boulevard | Durham NC 27703 | United States  
[iqvia.com/OCT](http://iqvia.com/OCT)