

# IQVIA GrantPlan

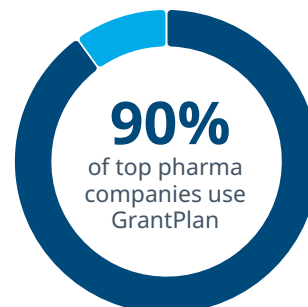
*A proven, trustworthy budgeting tool for investigator grants*

## A leader for a reason

With IQVIA GrantPlan, you can build more accurate investigator grant study budgets while reducing costs and improving start-up times. IQVIA GrantPlan is the *only* clinical trial budgeting tool that provides:

- Accurate budgeting and forecasting on a global scale
- A combination of the most robust sources of data across the industry
- Out-of-the-box deployment within days
- Fair Market Value (FMV) data from over 60 source countries and over 130 country equivalents
- Price list information to ensure complete benchmarks
- Unique U.S. standards of care recognition and allocation
- CSM expertise coupled with strong customer partnerships

Looking ahead, we are working toward AI-driven tool acceleration and improved user experiences for sites and sponsors. With AI, we will drive more quality benchmarks through automated data ingestion from externally negotiated budgets. We're also automating the creation of Visit Schedules in GrantPlan via protocol to improve cycle time. With faster speed and higher performance, users will enjoy a smoother experience overall.

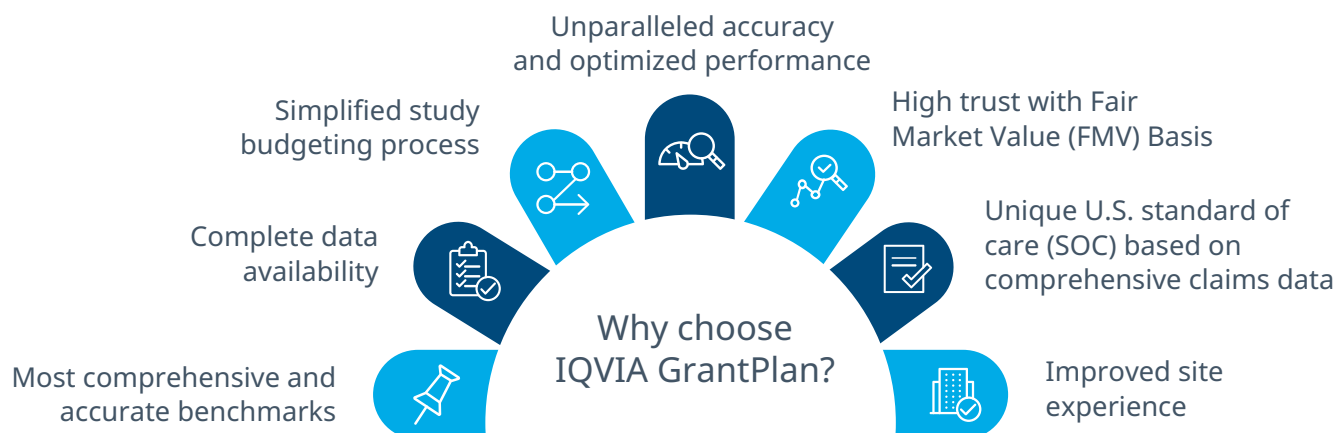


## Negotiate streamlined, compliant investigator grants

IQVIA GrantPlan simplifies the budgeting process, enabling life sciences companies and CROs to build and adjust realistic clinical trial budgets and better negotiate investigator grants globally across all study phases and therapeutic areas.

## Fast, accurate, efficient budgeting

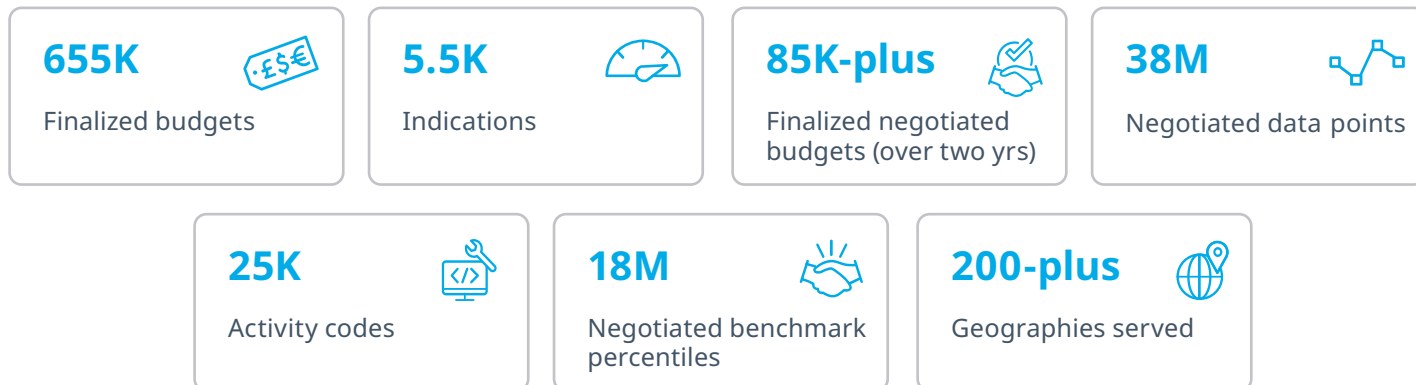
This cloud-hosted, multi-tenant solution helps sponsors improve the site and investigator experience while providing increased clarity and better oversight. The only cost tool to combine the most robust sources of data across the industry, GrantPlan provides FMV itemized costs that allow customers to more precisely budget across over 175 countries and 5,500 indications as they plan clinical trials.



# GrantPlan by the numbers

Over 15 years of clinical trials negotiated data within GrantPlan

Since 2009:



## Defend your decisions with the most up-to-date data available

### Continual information updating

Benchmarks are continuously expanded with blinded user data at the completion of each study. Data is refreshed quarterly.

### Complete data availability

For price list, where actual data is insufficient, proprietary algorithms substitute benchmark costs that are updated annually. The client never sees a zero in a line item. Supporting information is provided.

### Power of three and five

Actuals come from at least three companies and at least five data points no more than two years old.

### Improved transparency and governance

Sponsors can run budgets through GrantPlan for evidence-based knowledge of what they should expect to see from CROs.

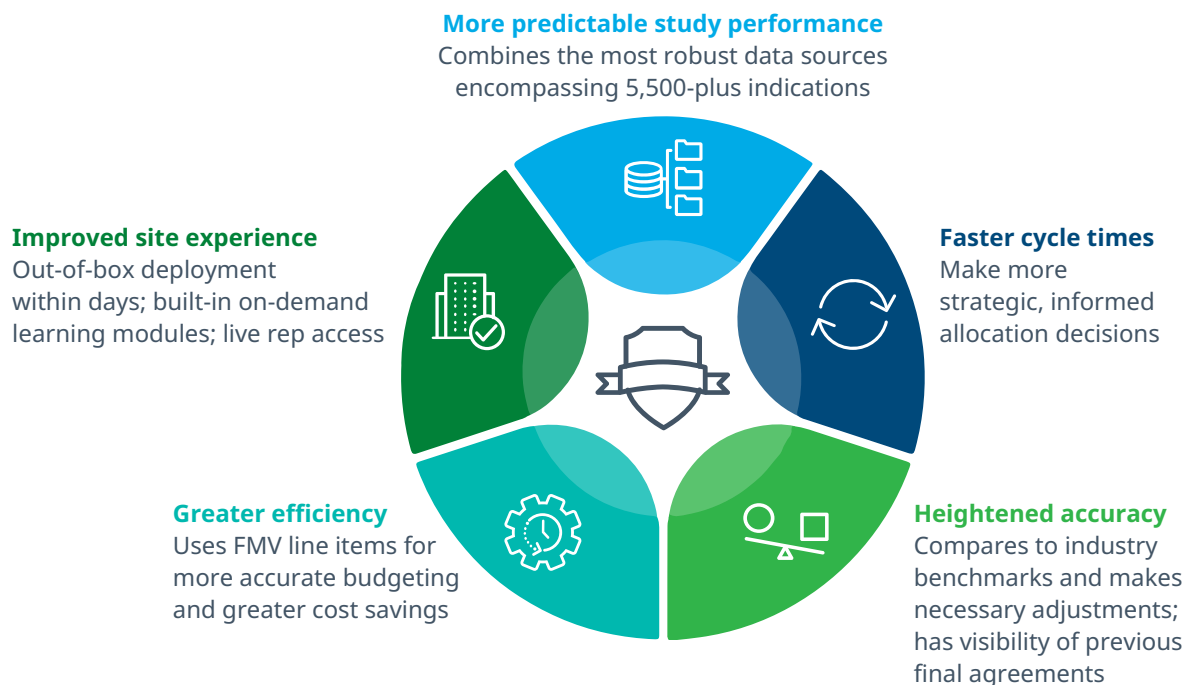


## GrantPlan Investigator-initiated study (GPI) tools

GPI is the only tool built specifically for IIS. It allows users to forecast and evaluate FMV to assess and determine IIS budgets:

- Includes additional sections and line items (FTE and per-hour personnel fees)
- Codes by specialty and years of experience using in-application calculations
- Can enter percent allocation and duration for each FTE, and system calculates appropriate budget

## Unparalleled accuracy and optimized performance



For more information on how IQVIA GrantPlan can improve your clinical trials' probability of success, please contact us today to speak with an expert: [orchestrateyourtrials@iqvia.com](mailto:orchestrateyourtrials@iqvia.com).