

# IQVIA Data Query System

*Find better matched sites and investigators for your clinical trials.*

## Overcome the challenges of identifying investigators and sites for your studies

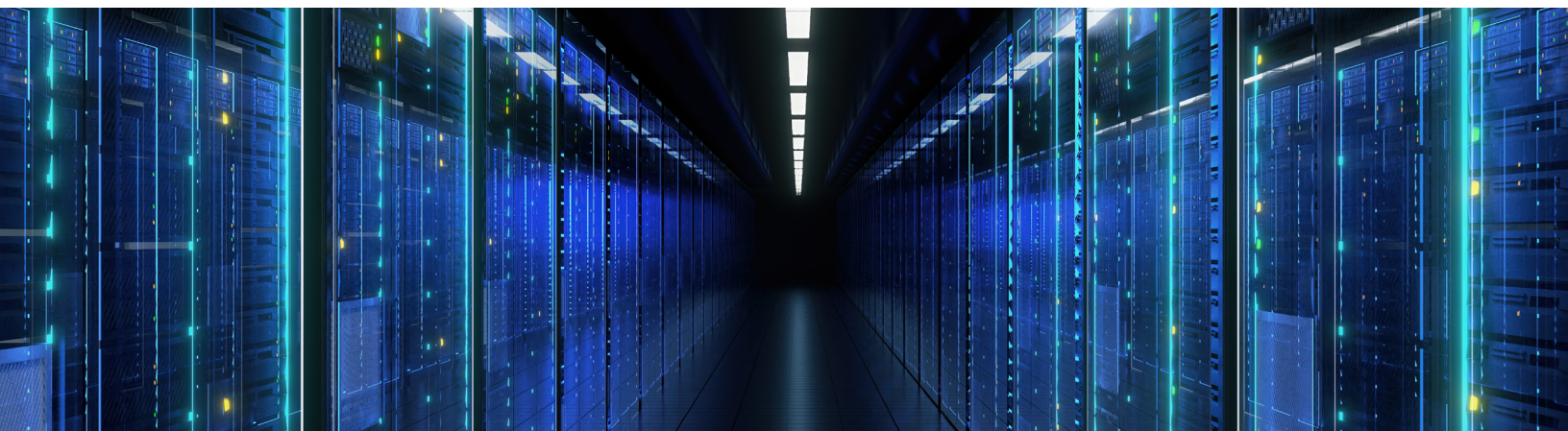
A traditional approach to identifying sites and investigators frequently results in enrollment failures, leading to study delays and inefficiencies in site selection-related trial spend.



## An evidence-driven approach for more successful study planning and site identification

Data Query System (DQS) uses master data management in a highly robust, searchable data repository that enables sponsors and CROs to find better matched investigators and sites for their clinical trials and better support study planning.

This cloud-based system provides participating sponsors access to an expanded repository of clean information from a greater pool of investigators and sites beyond those in their own databases.



# Improved accuracy & operational execution

DQS provides users with a significantly smarter list of sites built on an integrated view of the competitive landscape, historical performance, regulatory findings and country-level performance. The results include:



faster cycle times  
and more on-target  
identification of  
high-performing  
sites



reduced time  
spent on feasibility  
assessments  
and selecting  
and starting up  
inappropriate sites



fewer  
non-performing  
sites



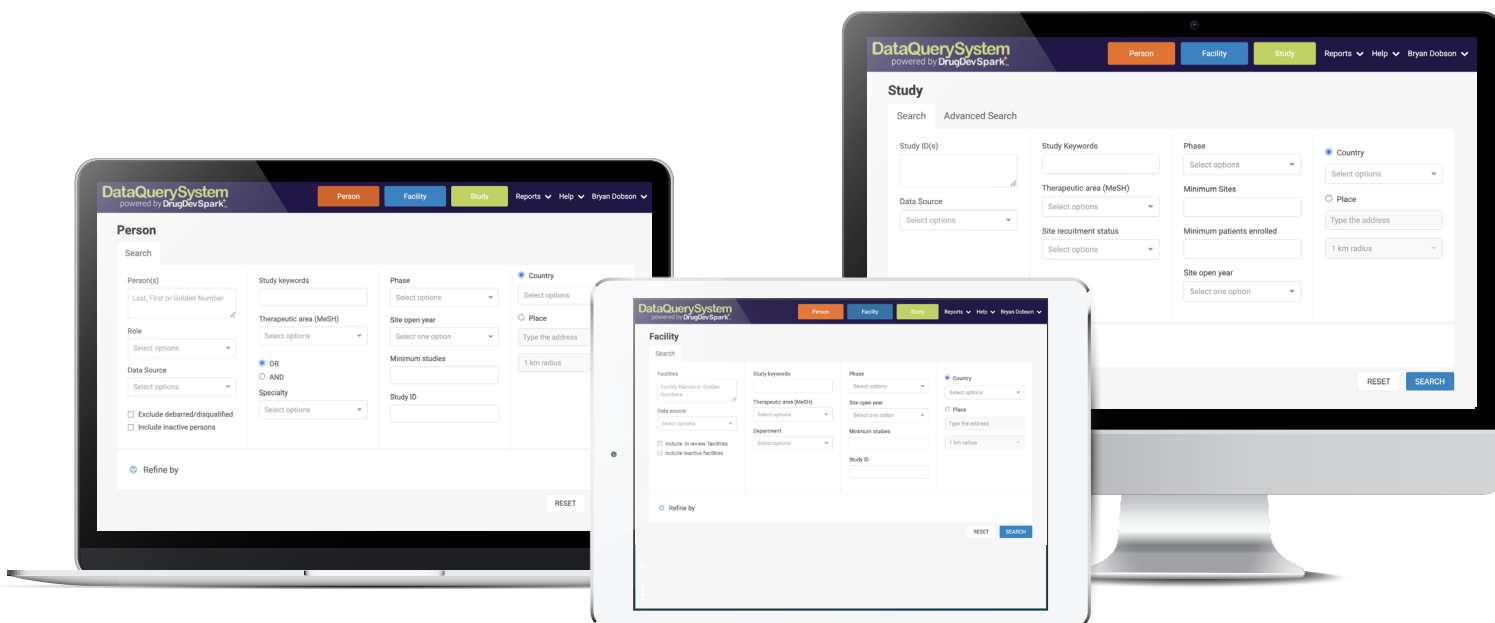
greater  
investigator  
engagement &  
satisfaction



minimized  
unanticipated  
costs, delays  
and rescue sites

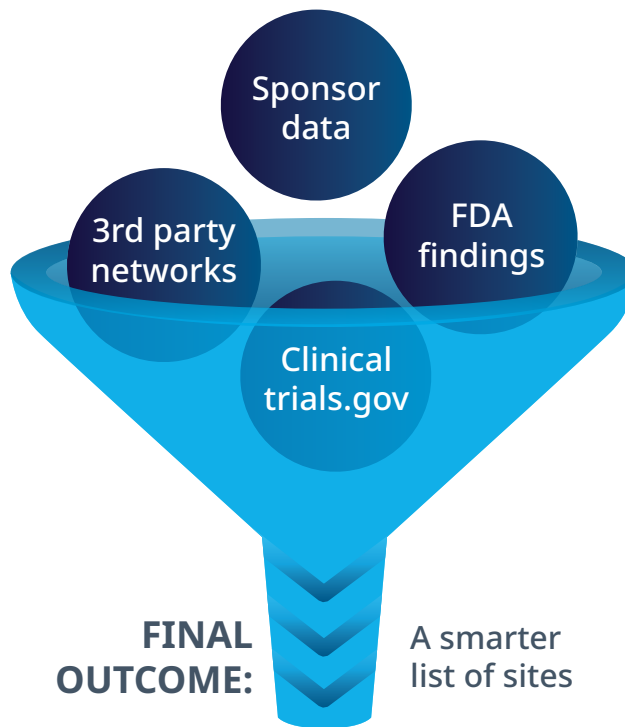
## Broaden your reach with DQS

DQS information is based on historical investigator, facility- and study-level enrollment metrics along with site-provided profile information. This enhances a sponsor or CRO's ability to find the right skills and experience – along with past performance in study recruitment and start-up times -- needed to better identify sites, conduct feasibility analyses and make study planning decisions, given the parameters of their studies. The user can identify ideal investigators/sites for their specific protocols, either directly within DQS or by feeding DQS shared data into their own systems.



# Good alone, better together

Reciprocal data sharing occurs through mutually agreed upon inter-company collaboration in the form of an Investigator Registry and the Investigator Databank. Member companies provide their CTMS data at least monthly and IQVIA adds updated public information, integrates, standardizes and cleans the data, using a unique "Golden Number".



## Deeper dive into how it works

