

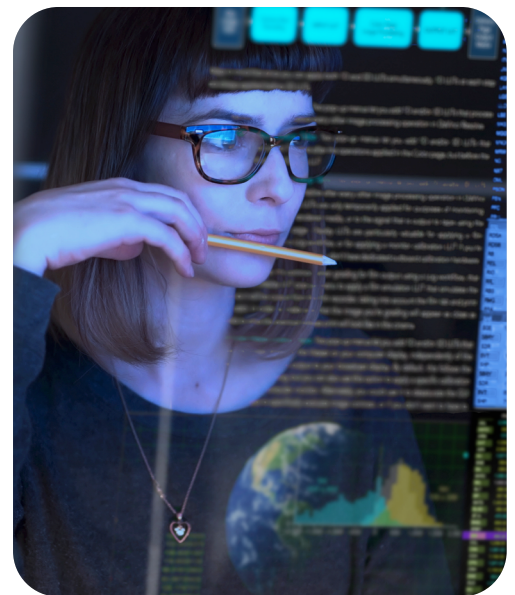
Gain Clear Insights Into Industry Pipelines and Plan For Your Product's Success

IQVIA Pipeline Link gives you access to pipeline and product launch data across 600 diseases and 75 countries

View historical and forecast data to see the bigger picture

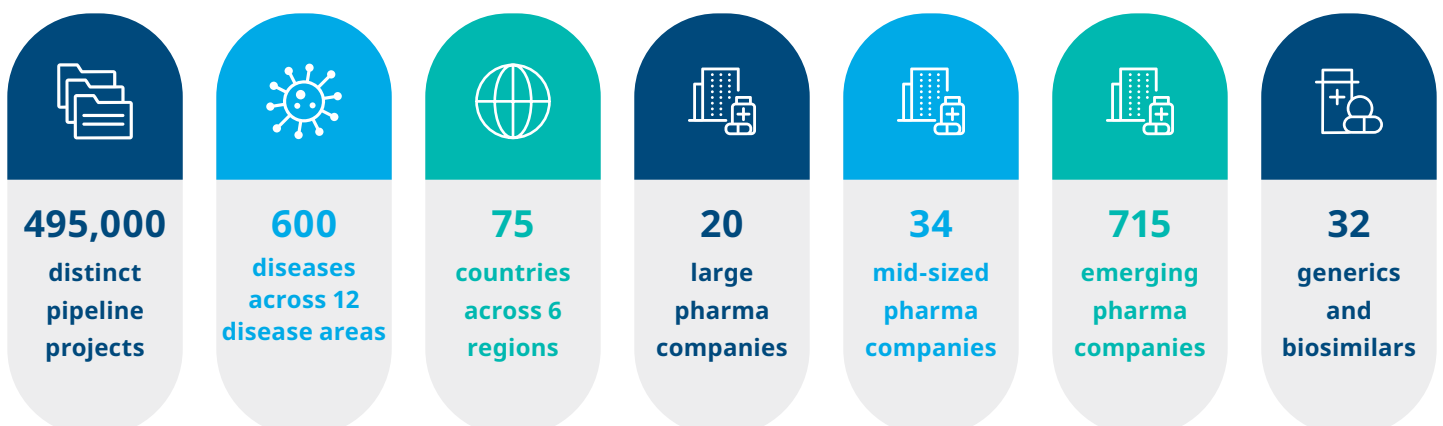
Each pharmaceutical company reports their pipeline data in different formats, and with different levels of data. This makes it extremely time and resource consuming to monitor and track your competitors' pipeline activity in your market and to get the important insights you need in order to understand the landscape, including possible challenges and opportunities, and ultimately plan for product success.

Pipeline Link offers a curated view of this data, taking companies' reported pipeline data and tagging it to a standardized map of diseases and clean product taxonomies to give you access to a consolidated view of the pipeline in your area of interest. Pipeline Link also adds a future-focus to this data, looking at current clinical trial data and historical analogues to not just show the current status of pipeline products, but to project forwards through every stage of development, up to and including commercial launch, country by country.



As part of the IQVIA Analytics Link ecosystem, Pipeline Link is delivered in a pioneering online platform that also brings together sales data for thousands of drugs for hundreds of diseases, across a vast array of countries, connected to launch, protection, and deals data.

Pipeline Link covers



A decade of forecasts at your fingertips

Pipeline Link provides you with a future-focused view of the pipeline in your market of interest so you can make better informed decisions for your product. Leveraging IQVIA's connected database of sales forecasts, not only do you have sight of predicted launch dates for each project, but you're also able to see a 10-year sales forecasts for new launches.

Access a deeper level of segmentation and detail

With Pipeline Link, you can get comprehensive and exact information to answer your questions or guide your planning. All projects in Pipeline Link are very precisely defined in terms of molecule, disease, company, country, therapy class and drug target addressed. In addition to providing current pipeline phase status, individual pipeline projects by country and by disease are linked to:

- Predicted timeline of phase progression
- Predicted launch date
- Forecast market sales

SUPER SEGMENT



X 600 diseases



X 75 countries

**View drug pipeline by country
and disease**

View disease pipeline by drug

Segment further by:

Drug target

Route of admin

Company

PREDICTIVE ANALYTICS



**Predicted
phase progress**



**Pipeline sales
forecasts**

Predict end of current phase

Predict country-specific launch date

Quantify pipeline forecast sales

Segment by disease and country

Answer your company, disease, or product type questions



What is the current pipeline in my disease of interest?



What is the bispecific antibody oncology pipeline of a company?



What is the biosimilar pipeline for a disease of interest?

A future-focused view of the pharma landscape

As well as a highly beneficial standalone platform, Pipeline Link's commercially-focused drug pipeline database docks seamlessly with IQVIA's wider Analytics Link and Forecast Link ecosystem. This enables you to get an even wider view of the pharma market both historically and in the future.

Email AnalyticsLinkSales@IQVIA.com today to see how IQVIA Pipeline Link could benefit you.