

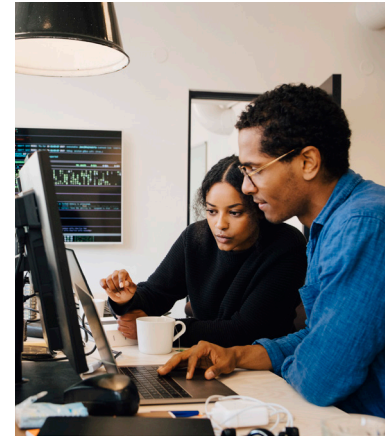
# Easily View Historical and Predicted Loss-of-Protection Dates, All in One Place

*IQVIA Protection Link provides you with a clear, visual representation to easily understand LoP dates and the evidence behind them*

## Discover a pre-calculated LoP date you can trust

The patent and exclusivity protection for pharmaceutical products is complex, varying country by country, and expertise is required to understand when a drug will be exposed to generic competition.

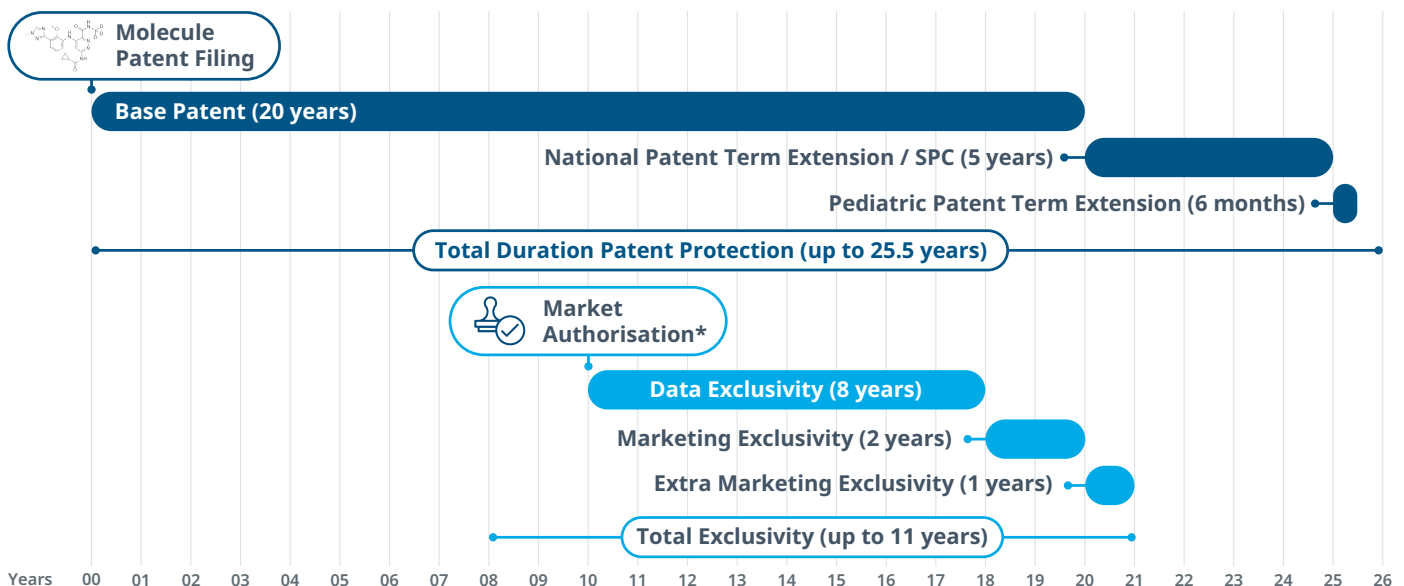
Providing a pre-calculated LoP date you can trust, IQVIA Protection Link is a commercially-focussed drug patent database. It adds 250,000+ LoP dates, together with supporting patent and exclusivity timeline evidence, to the Analytics Link ecosystem — a pioneering online business intelligence platform. All LoP dates and underlying evidence are precisely segmented by 600 diseases and 75 countries.



## A clear picture of patent and exclusivity

With such complexity around patent and exclusivity, it can be difficult to distinguish between their timings and to understand the multiple sub-elements involved. With Protection Link, the patent and exclusivity timelines are independent of each other, with the multiple sub-elements clearly displayed, so you can gain a clearer picture. The overall LoP date is determined by either end of patent protection or end of exclusivity, which is transparently set out for you in the platform.

### Illustrative patent and exclusivity timeline tracks

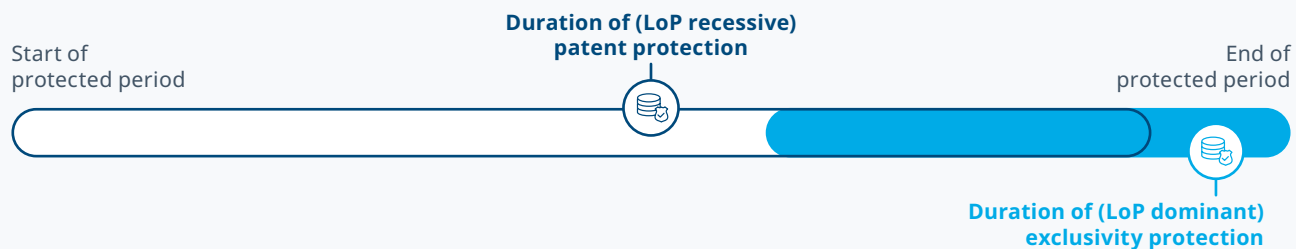


# Easily understand what is happening with upcoming LoP events and when

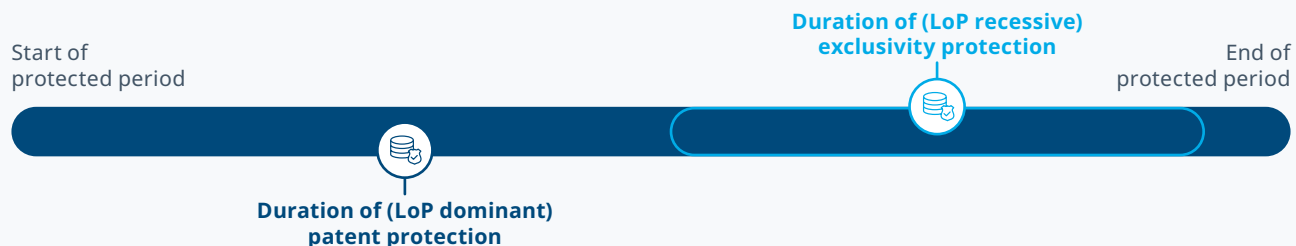
Having a clear picture of patent and exclusivity is crucial. That's why Protection Link uses a 'visual language' for intuitively communicating protection timeline data.

## Protection Link's visual language

The timeline bar conveys 3 durations: patent protection, exclusivity protection, and overall (net) protection.



The factor that determines LoP (LoP dominant) fills the box. The factor that is not dominant (LoP recessive) is represented by the outlined box.



The timeline bar can also convey significant country-level differences. Protection time boundaries that impact patents in one major market country, but not all major market countries, are depicted in a lighter shade.



Non-constraining patents are shown for completeness, but are differentially depicted in green, and do not influence the LoP date.

Constraining patent



Non-constraining patent



## Find the answers to your LoP questions

*In my disease market of interest, which drugs are facing upcoming LoP and when?*

*What is driving the LoP — patent or exclusivity?*

*What is the time structure of patent term extensions underpinning patent protection?*

*When exactly does my drug of interest lose protection, country by country?*



*What is the time structure of exclusivity sub-elements underpinning exclusivity protection?*

## Simplify LoP insights with Protection Link

IQVIA's Protection Link translates complex protection information into a clear, easy-to-understand format. By gaining a clear picture of LoP dates, you'll have a better understanding of when your drug of interest is losing protection in certain countries and what is driving the LoP, and plan accordingly.

Email [AnalyticsLinkSales@IQVIA.com](mailto:AnalyticsLinkSales@IQVIA.com) today to see how IQVIA Protection Link could benefit you.

