

A PORTFOLIO APPROACH TO EARLY CLINICAL DEVELOPMENT



Building a sustainable alliance model

THE CHALLENGE

Early clinical support across a diverse portfolio



Major global biopharmaceutical company

-  Streamline end-to-end early clinical support through one clinical research organization (CRO)
-  Operational and scientific expertise to develop programs across a pipeline of several therapeutic areas

THE SOLUTION

Early engagement and strategic planning



IQVIA subject matter experts actively participate in sponsor strategic planning sessions



In-house symposia for sponsor clinical research staff to brainstorm with IQVIA therapeutic experts

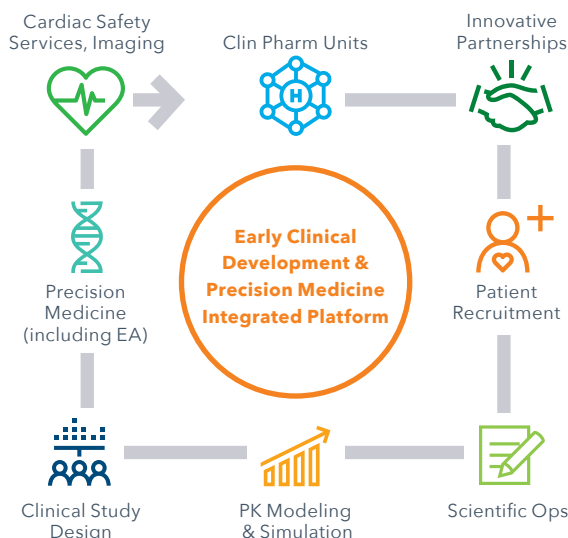
Centralized oversight and continuous process improvements



Single global delivery lead with operational oversight on all partnership studies



Continuous process streamlining proactive, study-specific risk mitigation through failure modes and effects analysis (FMEA)



Established cross-functional capabilities all in one place allowed us to provide the sponsor with comprehensive support and personal attention across their portfolio for:

- Simplified oversight
- Simplified contracting
- Earlier insight into compound viability

THE RESULTS

Results from continued engagement across the portfolio



Sustainable collaboration built on trust

- Innovation through willingness to pilot new ideas together
- Mutual advocacy & support within partnership
- Alignment towards common goals
- Understanding of each other's needs/processes

CONTACT US

iqvia.com/contactus