

# IFLEX SETUP INSTRUCTIONS FOR WINDOWS 8



## BEFORE YOU BEGIN:

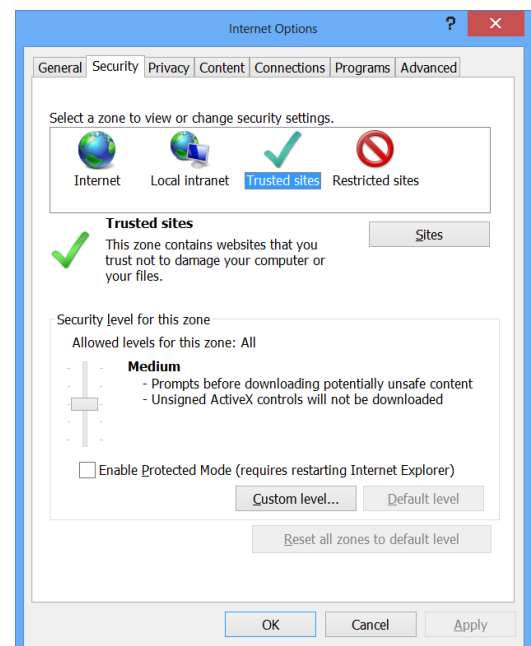
### CONNECT:

- > Ensure you have quality Wi-Fi connectivity to a wireless network (at least 2 or 3 bars).

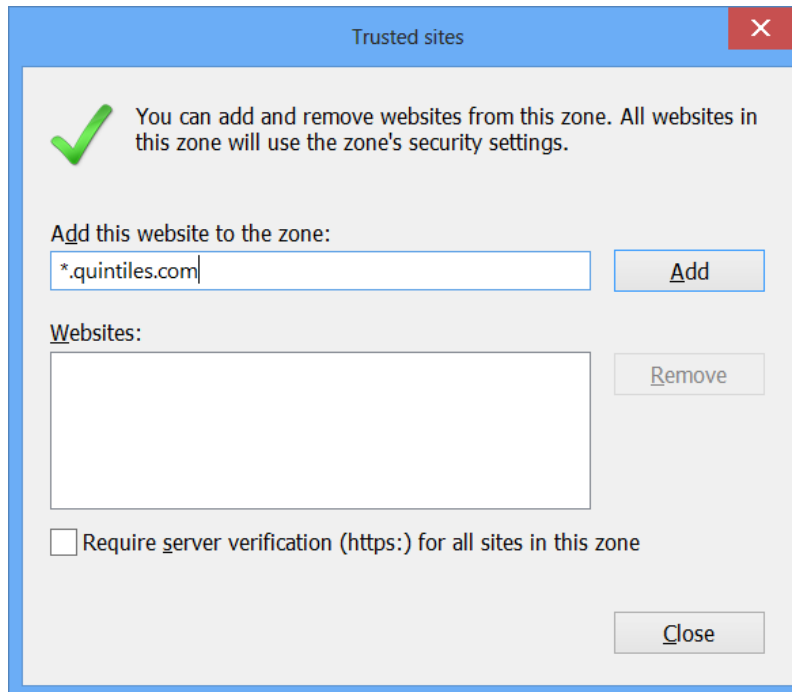
**NOTE:** The “Quintiles” Wi-Fi network in the office is not authorized for mobile devices.

## CONFIGURE INTERNET EXPLORER FOR IFLEX:

1. From the Tile screen, select **Desktop** to go into Desktop Mode
2. Launch **Internet Explorer** by clicking the  icon in the taskbar
3. Click the  icon in the top right of the screen to open a drop down menu
4. Select **Internet Options** and then click the **Security** **tab** in the window
5. Select **Trusted Sites** and then click the **Sites** button



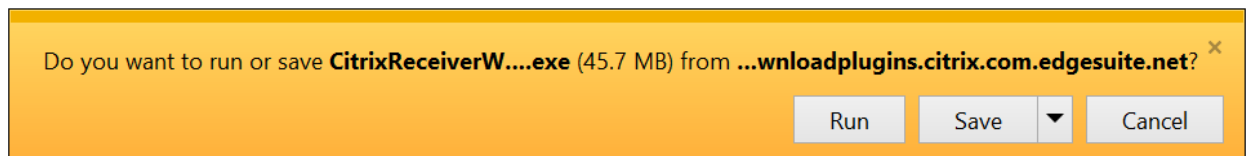
6. Delete whatever is in the entry field and type **\*.quintiles.com** and click **Add**. Also **uncheck** the “Require server verification...” option



7. Click **Close** and then click **OK** to close the Internet Options menu

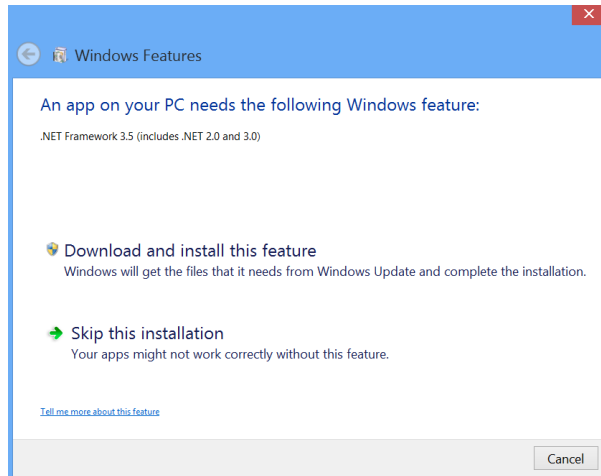
## INSTALLING CITRIX REVEIVER ON WINDOWS 8:

1. In Internet Explorer, go to [receiver.citrix.com](http://receiver.citrix.com)
2. Click **Download Receiver for Windows** and then read and agree to the terms of service before clicking **Continue**
3. On the next page it will prompt you to download, select **Run** to begin downloading



- a. If a User Access Control pop up appears, select **Allow Access**

4. The Installation window will close once it has finished installing. Windows will then prompt you to download the .NET Framework 3.5. Select **Download and install this feature**



5. Once it has finished being installed successfully, click the **Close** button to close the window and complete your Citrix Receiver installation

## LOGGING IN TO IFLEX ON WINDOWS 8:

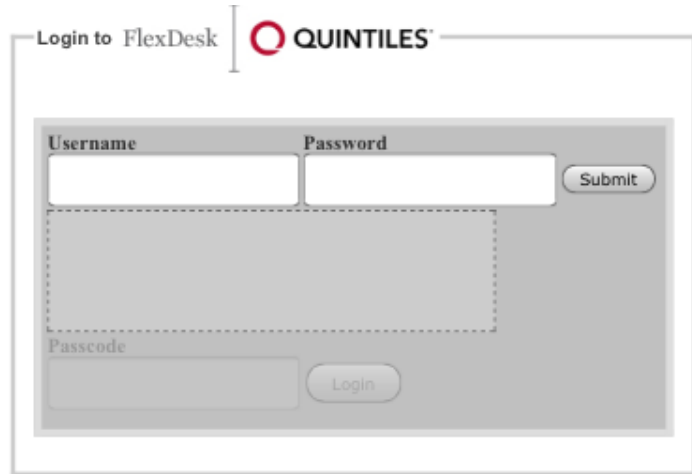
1. In your web browser, go to [iflex.quintiles.com](http://iflex.quintiles.com)
1. Log in to iFlex using your qID and password and select **Submit**. Then enter your assigned Pin for your Passcode and tap **Login**

**NOTE:** If you use Google Chrome, you will see the following message:



Simply tap **Skip to Log on** to continue.

2. Once your logged in, tap the **iFlex** icon
3. iFlex will then proceed to launch and the installation of iFlex will now be complete



The screenshot shows a login window titled "Login to FlexDesk" with the QUINTILES logo. The interface includes a "Username" field, a "Password" field, and a "Submit" button. Below these fields is a dashed rectangular box. At the bottom, there is a "Passcode" field and a "Login" button.