

# IFLEX SETUP INSTRUCTIONS FOR WINDOWS 10




## BEFORE YOU BEGIN:

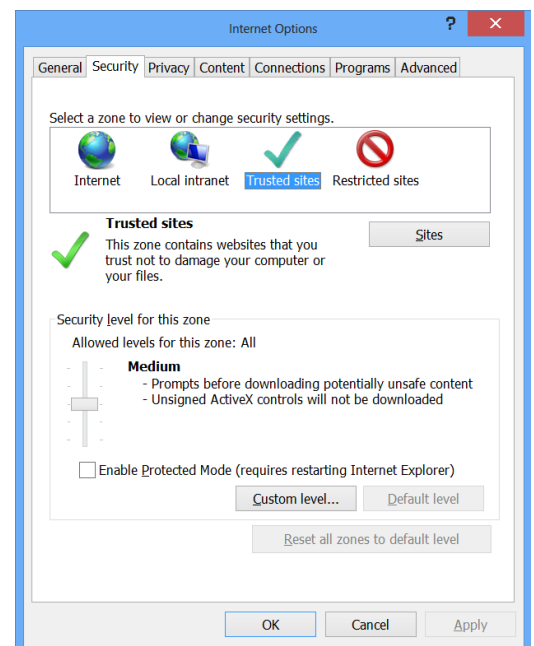
### CONNECT:

- > Ensure you have quality Internet connectivity; if using a wireless network (at least 2 or 3 bars)

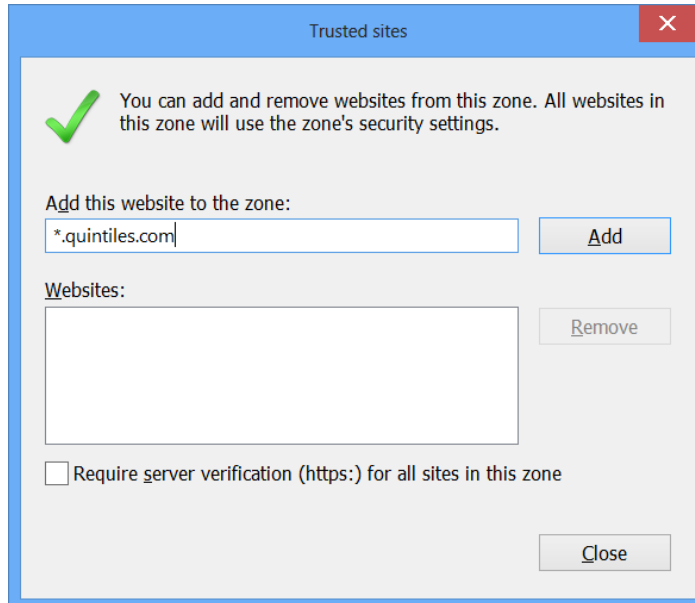
**NOTE:** The “Quintiles” Wi-Fi network in the office is not authorized for mobile devices.


## CONFIGURE INTERNET EXPLORER FOR IFLEX:

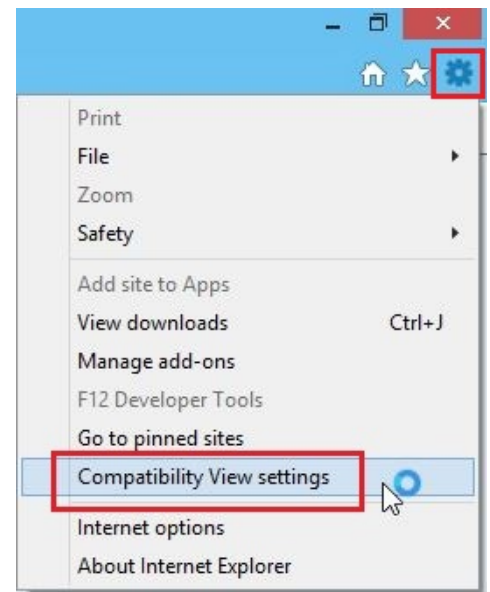
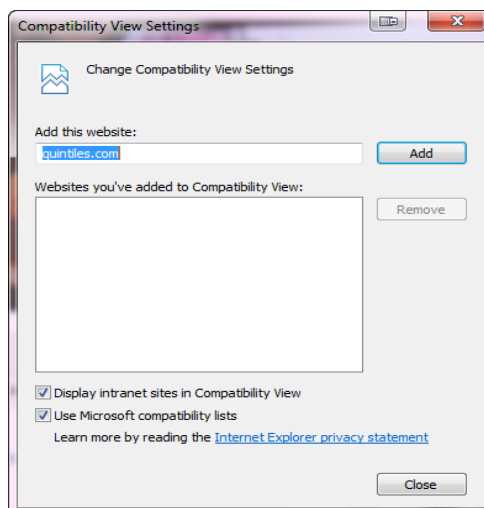
1. Locate the Start Button  on your Windows 10 Computer
2. Locate **Internet Explorer** then click the  icon to launch.
3. Click the  icon in the top right of the screen to open a drop down menu
4. Select **Internet Options** and then click the **Security tab** in the window
5. Select **Trusted Sites** and then click the **Sites** button



6. Delete whatever is in the entry field and type **\*.quintiles.com** and click **Add**. Also **uncheck** the “Require server verification...” option




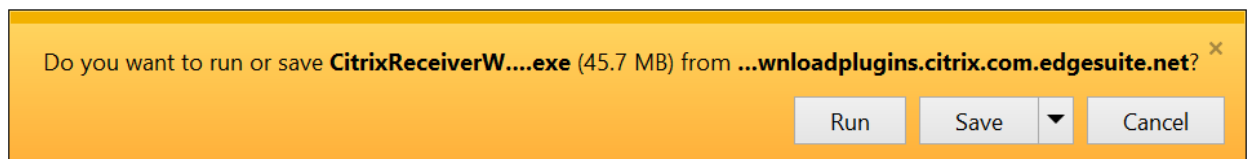
7. Click **Close** and then click **OK**
8. Click the  icon in the top right of the screen to open a drop down menu
9. Select Compatibility View Settings
10. Type **quintiles.com** and click **Add**



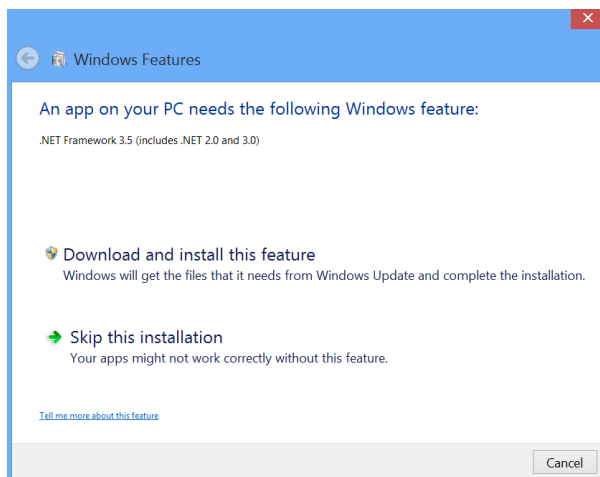
11. Then click **Close**

## INSTALLING CITRIX RECEIVER ON WINDOWS 10:

1. In Internet Explorer, go to [receiver.citrix.com](http://receiver.citrix.com)
2. Click  and then read and agree to the terms of service before clicking **Continue**
3. On the next page it will prompt you to download, select **Run** to begin downloading



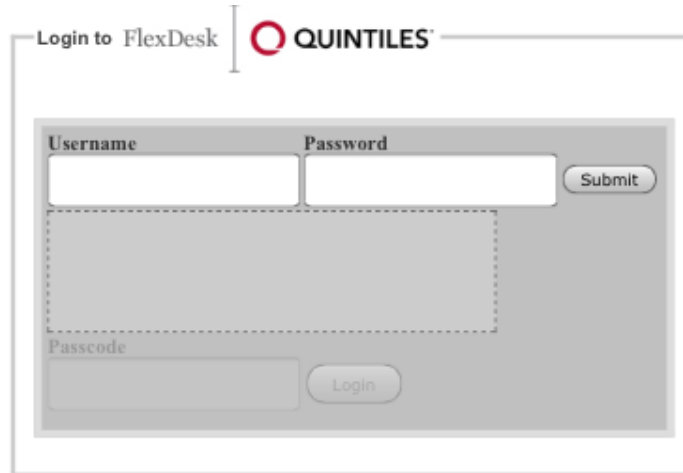
- a. If a User Access Control pop up appears, select **Allow Access**
4. The Installation window will close once it has finished installing. Windows will then prompt you to download the .NET Framework 3.5. Select **Download and install this feature**



5. Once it has finished being installed successfully, click the **Close** button to close the window and complete your Citrix Receiver installation

## LOGGING IN TO IFLEX ON WINDOWS 10:

1. In your web browser, go to [iflex.quintiles.com](http://iflex.quintiles.com)
2. Log in to iFlex using your qID and password and select **Submit**. Then enter your assigned Pin for your Passcode and tap **Login**



3. Once your logged in, tap the **iFlex** icon  
iFlex will then proceed to  
launch and the installation of  
iFlex will now be complete

