

# Join IQVIA at Virtual ISPOR, May 18-20, 2020

*Real world evidence. Real HEOR and market access expertise. Real results.*

IQVIA's real world evidence experts will be contributing to a range of events at Virtual ISPOR 2020 from May 18–20.

Discover the latest insights from our live online presentations, issue panel and workshop discussions and 57 poster abstracts.



## Oral presentations

**PB2 • Adherence to injectable antidiabetic therapies (IAT) among patients with type 2 diabetes mellitus (T2DM) in China - results from a cross-sectional survey study**

Chen T, Zhou L, Ma X, Wu H, Cai B, Tong J, Liu X, Ji Q  
Monday, May 18 • 11:15AM–11:30AM

**TP3 • The consistency of US real-world rheumatoid arthritis disease-modifying antirheumatic drug treatment patterns with American College of Rheumatology guidelines**

Dore RK, Antonova J, Chang L, Huang H, He J, Genovese MC  
Wednesday, May 20 • 10:30–10:45

## Issue panel

**IP1 • Moving from ideas to action – what is the role of global collaboration?**



*“Wide and active collaboration is the best way to accelerate real world evidence evaluation and adoption but it is not always the easiest or shortest path. Envisaging the likely barriers to progress helps to plan for success”*

Alison Bourke, Scientific Director, Center for Advanced Evidence Generation, IQVIA; Core Member, GetReal Think Tank (Issue Panel Panelist)

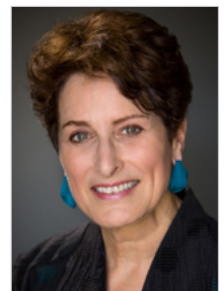
Monday, May 18 • 11:00AM–12:00PM

## Workshop

**W12 • Optimisation of registry data quality – a workshop to demonstrate how a simple tool (REQueST®) can be used by HTA, regulatory bodies and registry owners**

*“Explore REQueST, a new tool developed by EUnetHTA partners for assessing the quality of registry data for regulatory and HTA purposes”*

Nancy Dreyer, Chief Scientific Officer and Senior Vice President; Head, Center for Advanced Evidence Generation, IQVIA (Workshop Discussion Co-Leader)



Wednesday, May 20 • 10:00AM–11:00AM

## NEW ISPOR PUBLICATION ARTICLE

**Call in the PROs: Giving credence to the patient's perspective in healthcare decision making**

*IQVIA experts and co-authors consider lessons learned from oncology for building a sound PRO strategy*

**ISPOR VALUE & OUTCOMES SPOTLIGHT**  
MARCH/APRIL 2020  
VOL. 6, NO.2,  
pages 34-38



**DOWNLOAD**

# Poster abstracts

## GENERATE THE RIGHT EVIDENCE

Explore in our poster abstracts at Virtual ISPOR how we are applying innovative approaches to seamlessly integrate data, advanced analytics, transformative technology and deep domain expertise to deliver validated, representative, relevant results of benefits, risks and outcomes across a range of therapy areas.

CODE	BIOLOGICS/BIOSIMILARS/REGENERATIVE MEDICINE	AUTHORS
PBI19	BUDGET IMPACT ANALYSIS OF IXEKIZUMAB, GUSELKUMAB, RISANKIZUMAB AND/OR SECUKINUMAB FOR MANAGEMENT OF MODERATE-TO-SEVERE PSORIASIS IN THE KINGDOM OF SAUDI ARABIA	Al Jedai A, AL-Mudaiheem H, Aldail M, Fatani M, Binamer Y, Sharma Y, Mohamed O, Awad N, Al-Amaa T
	<b>CANCER</b>	
PCN36	A SYSTEMATIC REVIEW OF THE HUMANISTIC BURDEN OF FLT3-MUTATED RELAPSED/REFRACTORY ACUTE MYELOID LEUKEMIA	Casamayor M, Gubbels L, Garnham A, Shah MV
PCN52	IMPACT OF LOWER COST BIOSIMILAR OPTIONS ON PATIENTS IN THE U.S. HEALTHCARE SYSTEM	Shelbaya A, Yang J, Brown J, Adler J, Mahmood A
PCN74	COST OF IMMUNOTHERAPY TO TREAT EXTENSIVE STAGE SMALL CELL LUNG CANCER (ES-SCLC)	Bilir SP, Ogale S
PCN78	UTILIZATION AND COSTS ASSOCIATED WITH HOSPITALIZATIONS AMONG ADULTS WITH RELAPSED AND REFRACTORY MULTIPLE MYELOMA IN THE US	Yeaw J, Shah D, Anupindi VR, Kudaravalli S, Zavisic S, Richter J
PCN115	COST-UTILITY ANALYSIS FOR METASTATIC MERKEL CELL CARCINOMA (MMCC) TREATMENT IN TAIWAN – ADAPTING A GLOBAL MODEL FOR AN ULTRA-RARE LIFE-THREATENING DISEASE	Palencia R, Hsu JC, Lin AY, Goh C, Chang HC, Chou P, Kuo K, Chang WC
PCN129	A COST-UTILITY AND BUDGET IMPACT ANALYSIS OF ENZALUTAMIDE FOR THE TREATMENT OF NONMETASTATIC CASTRATION-RESISTANT PROSTATE CANCER (NMCRPC) IN MEXICO	Toro W, Braun S, Sanchez LA, Anaya P
PCN130	THE COST-EFFECTIVENESS AND BUDGET IMPACT OF EARLY RITUXIMAB USE IN ASYMPTOMATIC FOLLICULAR LYMPHOMA (FL) IN THE US	Shelbaya A, Kowal S, Wehler E, Ferruffino C, Al Taie A, Nava-Parada P
PCN161	REAL-WORLD EVIDENCE ON ECONOMIC BURDEN OF MULTIPLE MYELOMA IN CHINA – A RETROSPECTIVE STUDY OF CLAIMS DATA	Wang J, Zhang X, Liu S, Sun R, Liu J
PCN254	CORRELATION OF PRICE PREMIA AND HTA BENEFIT RATINGS FOR ONCOLOGY PRODUCTS IN GERMANY AND FRANCE	Courmier D, Baartz M, van Engen A, Tao T, Wagner P, Mistry J, Constandse T
PCN273	BIOMARKER TESTING IN NON-SMALL CELL LUNG CANCER (NSCLC) – WHERE WE HAVE BEEN, WHERE WE ARE GOING?	Kumar J, Chawla E, Goyal R
PCN278	CORRELATION BETWEEN THE BRIEF FATIGUE INVENTORY (BFI) AND FUNCTIONAL ASSESSMENT OF CANCER THERAPY-PROSTATE (FACT-P) TO MEASURE FATIGUE IN MEN WITH METASTATIC CASTRATION-RESISTANT PROSTATE CANCER (MCRPC)	Ganguli A, Ramaswamy K, Turnbull J, Bhaduria H, Ivanescu C, Tombal B
PCN336	PSYCHOMETRIC ANALYSIS OF PATIENT-REPORTED OUTCOME MEASURES IN FLT3-MUTATED RELAPSED/REFRACTORY ACUTE MYELOID LEUKEMIA	Cella D, Corredoira L, Ivanescu C, Pandya BJ, Shah MV
	<b>CARDIOVASCULAR DISORDERS</b>	
PCV17	BUDGET IMPACT ANALYSIS OF PROPROTEIN CONVERTASE SUBTILISIN/KEXIN TYPE 9 INHIBITORS (PCSK9I) USE IN COMBINATION WITH STATINS FOR TREATMENT OF UNCONTROLLED LOW-DENSITY LIPOPROTEIN-CHOLESTEROL IN CORONARY HEART DISEASE IN THE KINGDOM OF SAUDI ...	Al Jedai A, AL-Mudaiheem H, Al-Zoby A, Hamada AB, Sobhy M, Pathak P, Mohamed O, Sayed Awad N, Al-Amaa T
PCV75	IDENTIFYING APPROPRIATE HOSPITALS FOR PATIENT RECRUITMENT IN CLINICAL TRIALS FOR CANADA USING MACHINE LEARNING ALGORITHMS	Arcia N, Dulawat MPS, Sommerford N, Ghosh B
	<b>DIABETES/ENDOCRINE/METABOLIC DISORDERS</b>	
PDB12	EFFICACY AND SAFETY OF ETELICALCETIDE IN THE TREATMENT OF SECONDARY HYPERPARATHYROIDISM IN ADULT PATIENTS WITH CHRONIC KIDNEY DISEASE UNDERGOING DIALYSIS – A SYSTEMATIC REVIEW AND META-ANALYSIS	Vatturi M, Hyderboini R, Veeranki P, Singh R, Inuganti B, Manne M, Dovari A, Chidirala S, Ranjan A, Tanushree C, Goyal R
PDB23	EXPLORATION IN HEALTHCARE RESOURCE UTILIZATION (HCRU) STUDY USING EMR DATABASE AND CLAIMS DATA	Yin Z, Zhou Y, Wu J, Zhang X, Sun R, Liu J, Xie Y
PDB33	THE EFFECT OF DEPRESSION ON HEALTH CARE UTILIZATION AND HEALTH EXPENDITURE IN PATIENTS WITH DIABETES	Wang H, Zhou Y, Yin Z, Xie Y
PDB44	DOES INCLUDING ACUTE PANCREATITIS AS A COMPLICATION HAVE AN IMPACT ON COST-EFFECTIVENESS ANALYSES USING THE IQVIA CORE DIABETES MODEL?	Monteiro S, Ramos M, Lamotte M

[Click here](#) for further details of poster abstracts available on the Virtual ISPOR 2020 website

CODE	DIABETES/ENDOCRINE/METABOLIC DISORDERS continued	AUTHORS
PDB45	THE BUDGET IMPACT OF SITAGLIPTIN VERSUS ORAL SEMAGLUTIDE FROM A US PAYER PERSPECTIVE	Alsumali A, Lautsch D, Kowal S, Li Q, Campbell C, Rajpathak S, Wehler E
PDB46	ELEVATED ANNUAL HEALTHCARE UTILIZATION AND DIRECT MEDICAL COSTS ASSOCIATED WITH DIABETES MELLITUS PATIENTS WITH OSTEOPOROSIS IN CHINA	Yin Z, Zhou Y, Liu J, Xie Y
PDB52	IMPACT OF USING DIFFERENT TYPES OF HBA1C PROGRESSION IN THE IQVIA CORE DIABETES MODEL	Ramos M, Monteiro S, Lamotte M
PDB56	CONTRASTING THREE TYPE 2 DIABETES CARDIOVASCULAR RISK EQUATIONS FOR EAST ASIA WITH UKPDS82 USING THE IQVIA CORE DIABETES MODEL	Ramos M, Monteiro S, Lamotte M
PDB72	THE PREVALENCE OF MICROVASCULAR COMPLICATIONS IN PATIENTS WITH TYPE 2 DIABETES MELLITUS IN CHINA – A SYSTEMATIC REVIEW AND META-ANALYSIS	Cheng Y, Qu S, Liu Y, Zhang Y, Xu W, Chen L
DRUGS & GENERICS		
PDG39	CHALLENGE OR OPPORTUNITY? THE EXPANSION OF DRUG VOLUME-BASED PROCUREMENT IN CHINA	Jin J, He Y, Mi M
PDG56	APPLICATION OF HEALTH TECHNOLOGY ASSESSMENT IN CHINA NATIONAL REIMBURSEMENT DRUG LIST PRICE NEGOTIATIONS – THE EVOLVING TREND AND IMPLICATIONS	Li HJ, Sun R, Liu J, Ming J, Zhao X, Liu Y, Xie Y
INFECTIOUS DISEASES		
PIN3	RELATIVE VACCINE EFFECTIVENESS OF QUADRIVALENT CELL-BASED VERSUS EGG-BASED INFLUENZA VACCINES AMONG ADULTS 50-64 YEARS OLD – A U.S. OBSERVATIONAL COHORT STUDY	Pelton S, Postma M, Divino V, Mould-Quevedo JF, DeKoven M, Krishnarajah G
PIN24	INCIDENCE AND COSTS OF INFLUENZA-RELATED HOSPITALIZATIONS BY COMORBIDITY IN THE UNITED STATES	Near A, Tse J, Young-Xu Y, Hong D, Reyes C
PIN81	EFFECT OF MOBILE HEALTH INTERVENTIONS ON ADHERENCE OF ANTI-RETROVIRAL THERAPY IN HIV INFECTED PATIENTS – A SYSTEMATIC LITERATURE REVIEW AND META-ANALYTIC SYNTHESIS OF RANDOMIZED CONTROLLED TRIALS	Adil M, Rajput A, Goyal R
MEDICAL DEVICES		
PMD12	THE BURDEN OF READMISSIONS IN THE POST-OPERATIVE POPULATION IN THE US – THE INFLUENCE OF MANAGEMENT WITH AN OSCILLATING POSITIVE EXPIRATORY PRESSURE DEVICE	Wehler E, Kowal S, Campbell C, Suggett J, Coppolo D
MENTAL HEALTH		
PMH5	EFFICACY AND SAFETY OF LURASIDONE AND OTHER ATYPICAL ANTIPSYCHOTIC AGENTS FOR BIPOLAR DEPRESSION – UPDATED SYSTEMATIC REVIEW AND META-ANALYSES	Williams R, Dembek C, Heller V, Singh R, Hagi K, Nosaka T, Loebel A
PMH7	ECONOMIC BURDEN OF TREATMENT-RESISTANT DEPRESSION AMONG ADULTS WITH CHRONIC NON-CANCER PAIN CONDITIONS AND MAJOR DEPRESSIVE DISORDER	Shah D, Zheng W, Allen L, Wei W, Madhavan S, LeMasters T, Sambamoorthi U
PMH24	BUDGET IMPACT ANALYSIS OF VORTIOXETINE AND/OR SERTRALINE USE FOR MANAGEMENT OF MAJOR DEPRESSIVE DISORDER IN THE KINGDOM OF SAUDI ARABIA	Al Jedai A, AL-Mudaiheem H, Mansour A, Albishi F, Al-Zekri F, Haines A, Mohamed O, Awad N, Al-Amaa T
MULTIPLE DISEASES		
PMU4	EVIDENCE FOR THE USABILITY OF THE E-TSQM	Williams P, Palmer A, Gemmen E, Rodriguez-Leboeuf AM
PMU7	IS THE TREATMENT SATISFACTION QUESTIONNAIRE FOR MEDICATION FIT-FOR-PURPOSE? – A MIXED-METHODS APPROACH	Rodriguez-Leboeuf AM, Palmer A, Gemmen E, Williams P
PMU23	QUANTIFYING THE COSTS OF OBESITY-RELATED COMPLICATIONS IN THE UNITED STATES – A RETROSPECTIVE DATABASE STUDY	Divino V, Ramasamy A, Anupindi VR, Eriksen KT, Olsen AH, DeKoven M, Meincke HH
PMU48	EFFECT OF MOBILE HEALTH INTERVENTIONS ON MATERNAL AND CHILD HEALTH – A SYSTEMATIC REVIEW OF RANDOMIZED CONTROLLED TRIALS	Ahlawat R, Kataria A, Goyal R, Sethi A
PMU55	UNDERSTANDING STAKEHOLDER PERSPECTIVES ON DRUG AFFORDABILITY – EVALUATING USE AND APPLICATION IN VALUE-BASED CARE	Uyei J, Johnson CE, Campbell C, Singh R, Rachev B, Kowal S
PMU88	CONITEC – AN IN-DEPTH ASSESSMENT OF THE BRAZILIAN NATIONAL HTA BODY EVALUATION CRITERIA AND DECISION-MAKING PATTERNS FROM 2012 TO 2018	Ballalai A, Duva A
PMU92	INVESTIGATION OF FACTORS CONSIDERED IN THE HEALTH TECHNOLOGY ASSESSMENT CONDUCTED BY REGULATORY AUTHORITY IN EIGHT COUNTRIES	Yuasa A, Yonemoto N, Demiya S, Foellscher C, Ikeda S
PMU114	PATIENT SATISFACTION WITH TREATMENT – CONCEPTUAL MODELS AND MEASURES	Gemmen E, Rodriguez AM, Jenkins M

[Click here](#) for further details of poster abstracts available on the Virtual ISPOR 2020 website

CODE	MUSCULOSKELETAL DISORDERS	AUTHORS
PMS2	RETROSPECTIVE ANALYSIS TO DETERMINE THE INCREASED RISK OF DEVELOPING OSTEOPOROSIS IN PATIENTS DIAGNOSED WITH DEPRESSION AND/OR PRESCRIBED ANTIDEPRESSANTS	Kandasamy T, Raupp M, Ashrafzadeh A, Krishnan B, Gregg J, Zhang H, Balusu JC, Barcella W, Lorenzo R, Dee A
	<b>NEUROLOGICAL DISORDERS</b>	
PND11	EFFICACY AND SAFETY OF BREXANOLONE IN THE TREATMENT OF POSTPARTUM DEPRESSION - A SYSTEMATIC REVIEW AND META-ANALYSIS	Vatturi M, Dovari A, Inuganti B, Soni P, Hyderboini R, Veeranki P, Manne M, Rajpal S, Chidirala S, Goyal R
PND70	EVALUATING THE IMPORTANCE OF DRUG ADMINISTRATION AND MONITORING COSTS IN ECONOMIC EVALUATION FOR MANAGEMENT OF MULTIPLE SCLEROSIS IN THE UNITED KINGDOM	Narang A, Panchal M, Goel R, Taneja L
	<b>NO SPECIFIC DISEASE</b>	
PNS22	ADAPTIVE DESIGNS IN REAL-WORLD HEALTH ECONOMIC AND OUTCOMES RESEARCH STUDIES - WHAT IS POSSIBLE?	Gemmen E
PNS74	AN ANALYSIS OF 2019 CHINA NATIONAL REIMBURSEMENT DRUG LIST NEGOTIATION - RESULTS AND INFLUENCING FACTORS	Liu Y, Zhao X, Ming J, Liu J, Sun R, Li HJ, Xie Y
PNS137	COMPARATIVE REVIEW OF PHARMACOECONOMIC GUIDELINES IN EUROPEAN COUNTRIES	Goel R, Mahajan K, Chatterjee M
PNS162	USING AMBULATORY EMR DATA TO COMPLEMENT MEDICAL CLAIMS DATA FOR PREDICTIVE ANALYTICS APPLICATIONS	Yasar O, Ali R, Malpede B, Hopson R, Aguilar D, Leavitt N
	<b>RARE &amp; ORPHAN DISEASES</b>	
PRO5	COMPARATIVE EFFICACY AND SAFETY OF PREVENTIVE THERAPIES FOR NEUROMYELITIS OPTICA - A SYSTEMATIC REVIEW AND NETWORK META-ANALYSIS	Kochar P, Randhawa S, Singh R, Goyal R, Lakkakula US, Bathla A
PRO70	PATIENT-REPORTED OUTCOMES (PRO) LANDSCAPE ASSESSMENT OF DRY AGE-RELATED MACULAR DEGENERATION (AMD) - A TARGETED LITERATURE REVIEW	Schultz NM, Braunack-Mayer L, Schwartz J, Gaspar L
PRO95	PSYCHOMETRIC EVALUATION OF A PATIENT-REPORTED OUTCOMES (PRO) INSTRUMENT FOR CONGENITAL THROMBOTIC THROMBOCYTOPENIC PURPURA (CTTP)	Oladapo A, Ito D, Rodriguez AM, Philpott S, Hibbard CO, Ewenstein B
PRO101	CHARACTERIZING RARE AND OTHER UNCLASSIFIED DISEASES LACKING ICD DIAGNOSIS CODES - AN EMR APPLICATION IN HEREDITARY ANGIOEDEMA (HAE)	Aguilar D, Yuan G, Wade RL, Lu J, Raupp M, Lichtenstein M
PRO103	REASSESSMENT OF A REAL-WORLD POPULATION OF ADULTS WITH TYPE 2 DIABETES (T2D) - WHEN LOW LEVELS OF C-PEPTIDE OR PRESENCE OF DIABETES AUTOANTIBODIES MIGHT INDICATE POSSIBLE TYPE 1 DIABETES (T1D)	Aguilar D, Yuan G, Wade RL, Lu J, Raupp M, Lichtenstein M
	<b>SENSORY SYSTEM DISORDERS</b>	
PSS7	ANNUAL CLINICAL AND ECONOMIC BURDEN OF NEOVASCULAR AGE-RELATED MACULAR DEGENERATION IN A MEDICARE PATIENT POPULATION	Keyloun K, Almony A, Shah-Manek B, Chen CC, Multani J, McGuinness CB, Campbell J
	<b>SURGERY</b>	
PSU28	AN ANALYSIS OF SURGICAL TRENDS IN HYSTERECTOMY FOR ENDOMETRIAL CANCER IN KOREA USING THE NATIONAL HEALTH INSURANCE AND SERVICES (NHIS) CLAIMS DATABASE	Shin M, Kim SJH, Kang H, Eoh KJ, Song N, Kim JA, Kim YT
	<b>URINARY/KIDNEY DISORDERS</b>	
PUK5	OVERACTIVE BLADDER IN THE UNITED STATES LONG-TERM CARE SETTING IS ASSOCIATED WITH SIGNIFICANT BURDEN AND INCREASED HEALTHCARE RESOURCE UTILIZATION AND COSTS - A RETROSPECTIVE DATABASE STUDY	Yeaw J, Shah D, Kincaid A, Mudd Jr PN
PUK7	COST-EFFECTIVENESS OF MIRABEGRON VERSUS ANTIMUSCARINICS FOR THE TREATMENT OF OVERACTIVE BLADDER IN ARGENTINA	Ramos B, Sánchez Trujillo LA, Walker D, Anaya P

[Click here](#) for further details of poster abstracts available on the Virtual ISPOR 2020 website