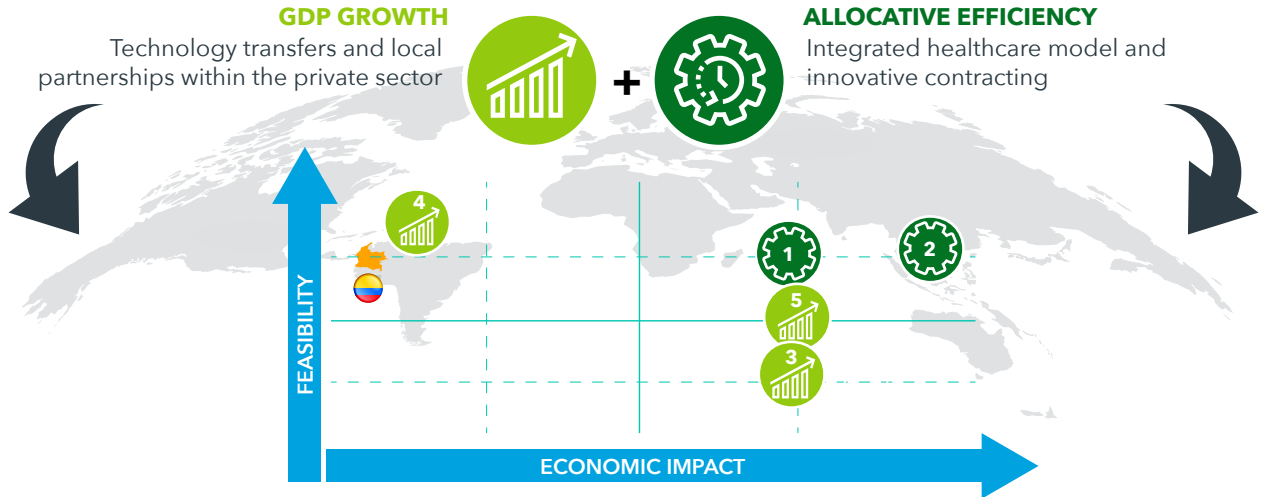


POTENTIAL IMPACT WHEN APPLYING STRATEGIC APPROACHES TO COLOMBIA

GDP growth and allocative efficiency approaches met country level challenges for Colombia with high feasibility and economic impact.



APPROACHES TO MEET SUSTAINABILITY CHALLENGES IN COLOMBIA



INNOVATIVE CONTRACTING

- Increasing Demand for Healthcare Service & Technology
- Unlimited Access to Services
- Healthcare Model of Diagnosis and Prevention



INNOVATIVE GRANTS FOR INVESTMENT

- Inadequate Health Expenditure Growth
- Administrative Inefficiencies



INTEGRATED HEALTHCARE MODEL

- Inadequate Health Expenditure Growth
- Administrative Inefficiencies
- Increasing Demand for Healthcare Service & Technology
- Unlimited Access to Services
- Healthcare Model of Diagnosis and Prevention



PROMOTION OF LOCAL R&D

- Increasing Demand for Healthcare Service & Technology



TECHNOLOGY TRANSFER AND PRIVATE PARTNERSHIPS

- Inadequate Health Expenditure Growth
- Administrative Inefficiencies

PERCEIVED BENEFITS OF STRATEGIC APPROACHES

Prioritized By Economic Impact and Feasibility.



Integrated healthcare model

allows for enhanced emphasis on prevention and early diagnosis thus reducing future higher-cost procedures and their associated complications.



Innovative contracting

provides health systems with the opportunity to more directly measure and pay for value.



Technology transfer and private partnerships

would further promote skill building through increased opportunities to learn best practices within the healthcare sector.



Download the IQVIA Institute report at www.iqvainstitute.org/LatAmHealthSectorPotential